

e-Fiche

v2.2 Installation Instructions

1. Insert the DVD in your first available DVD drive. The install wizard will check for a copy of the previous version of e-Fiche. If an older version of e-Fiche is found it will be automatically deleted.

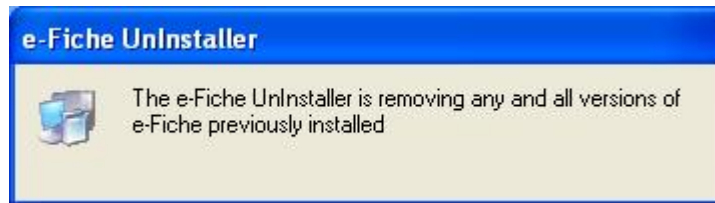


Figure 1.1

2. Next, the install wizard will ask you if you would like to install e-Fiche onto your computer, or if you would like to run e-Fiche from the DVD.

Note: We highly recommend that you install e-Fiche v2.2 to your computer. You can do this by selecting the 'Install on Workstation' button.



Figure 2.1

3. When the directory menu is prompted click on the check box's for CD1,CD2 CD3,CD4 and CD5. When those boxes have been checked click the Next button.

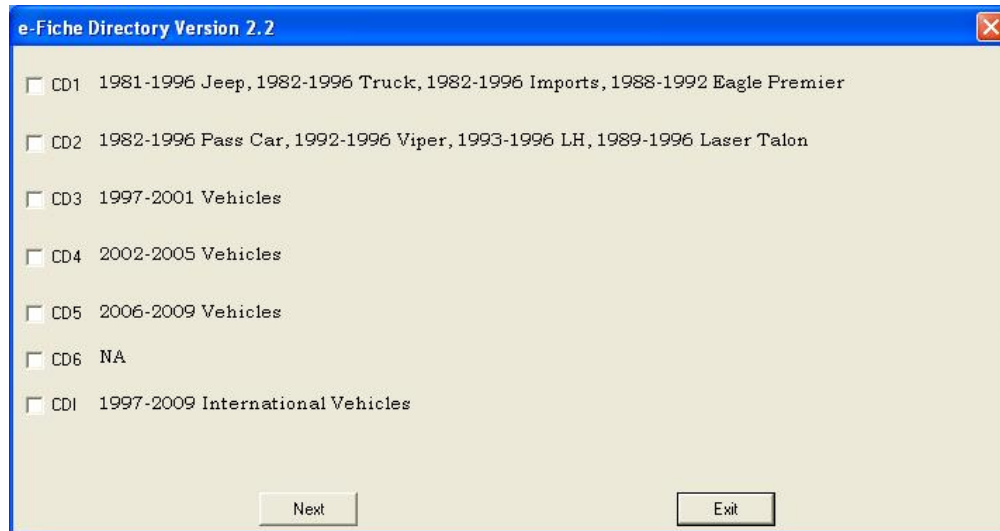


Figure 3.1

4. No action is required during the install. The prompted below will be displayed for about 10 minutes while the data is installed.

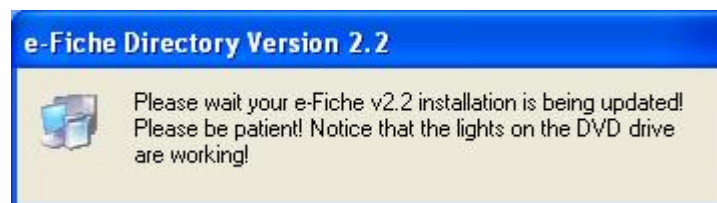


Figure 4.1

5. Once the install is complete you will be required to reboot the PC.

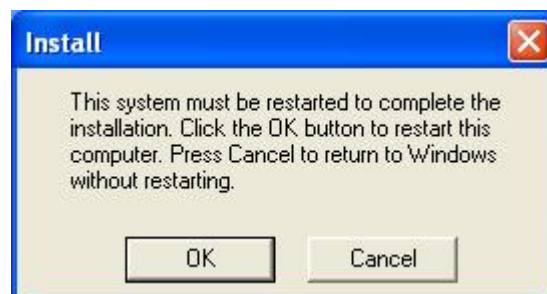


Figure 5.1

- When the PC is back up after the reboot you will see the e-Fiche V2.2 Menu icon your desktop. To start the program double click the icon and the e-Fiche Directory Menu will be launched. Under each CD button you will see the date for the last time the data was updated. Click the CD button of choice to open the catalog index's for the listed vehicles.

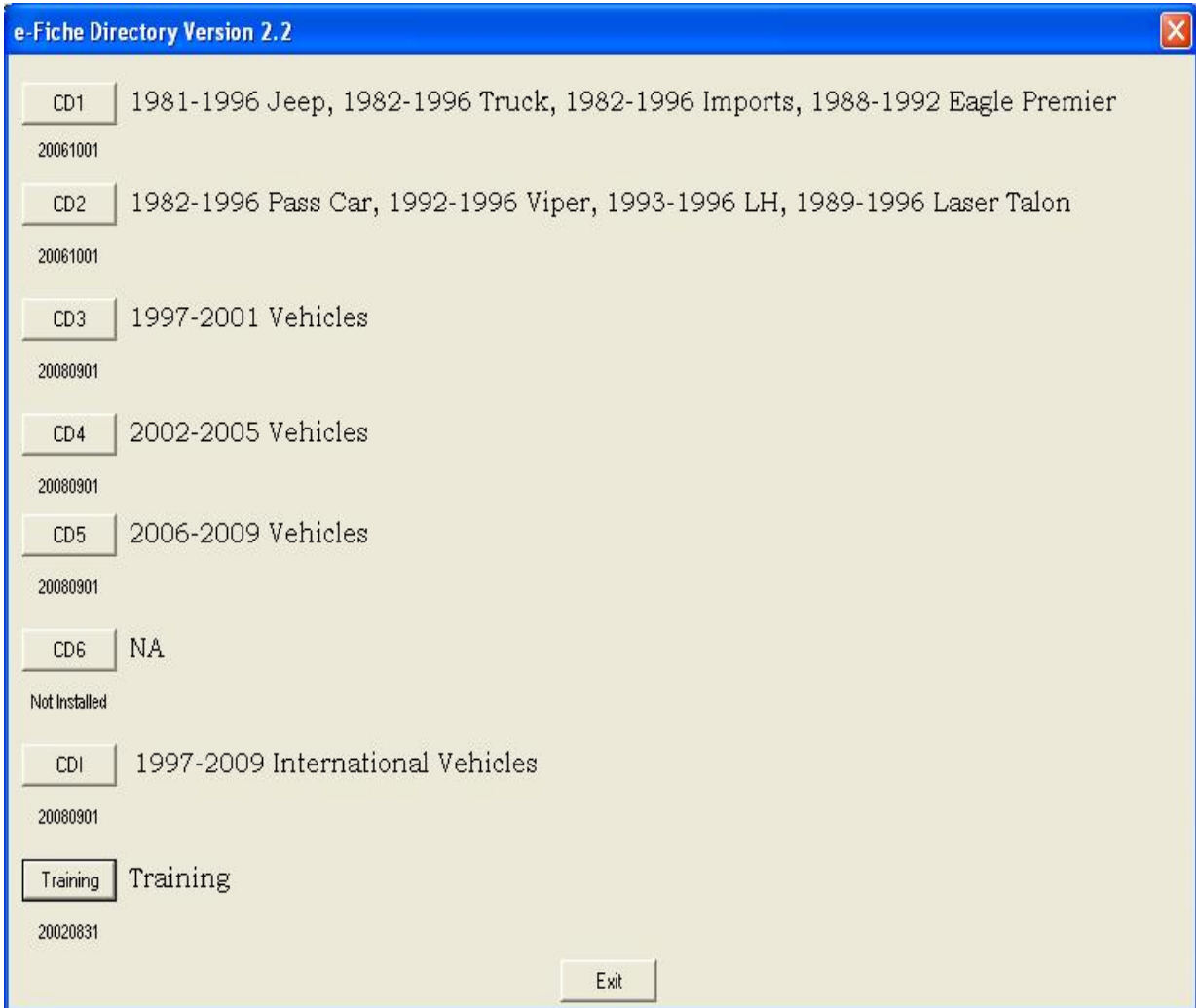


Figure 6.1

- If you have any questions about or problems with e-Fiche please contact the DealerCONNECT Help Desk at 1-800-374-4040.