

# e-Fiche

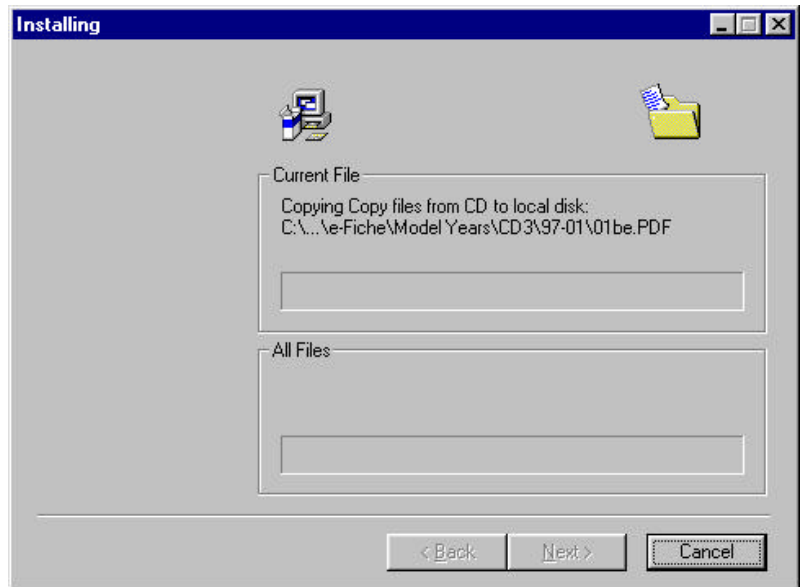
## Instructions for loading your monthly update CD(s)

1. **Insert the 'Update' CD in the first available CD ROM drive. (CD3 is used in this example)**
2. **The install wizard will automatically begin updating the necessary files on your hard drive.**

**Please note that the install wizard will update only the files that need to be updated and 'skip' the files that do not. This will save time during the update process.**

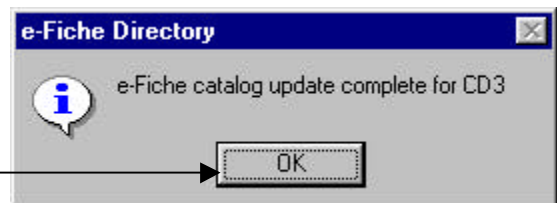


3. **The Install Wizard is now updating (copying) the changed e-Fiche files onto your computer.**



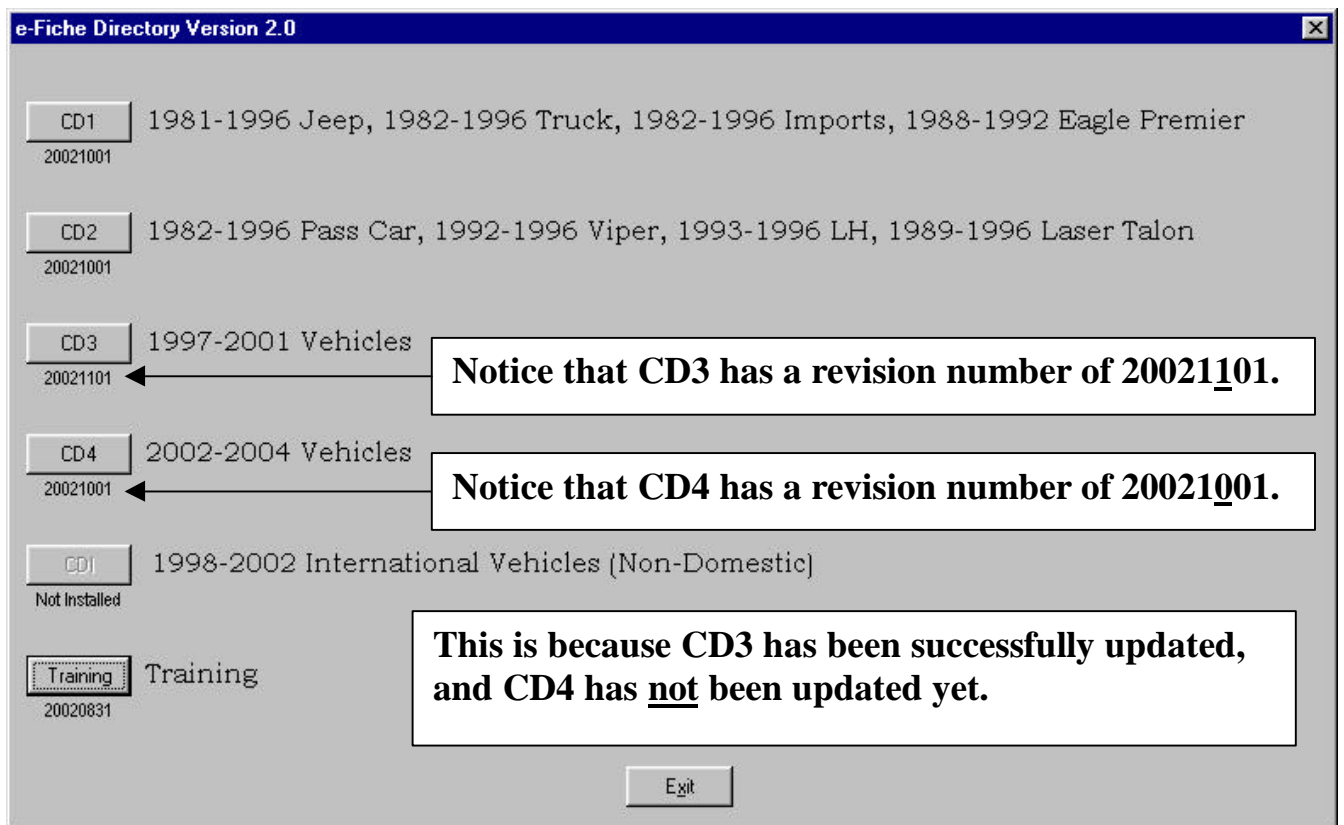
4. **Once the CD is finished loading, you will receive this message box.**

5. **Select the 'OK' button.** Click Here



6. **Once the update process is complete, you can now verify that the update process was successful.**
7. **To verify that your update was successful, just look at the number under the CD button. This number is called the revision number.**

**Below is an example of CD3 being successfully updated. Please notice that no update was made to CD4, so the revision number has not changed. Once CD4 is (successfully) updated the revision number will also change.**



**If you have difficulty with the update process please call the DealerCONNECT Help Desk at 1-800-374-4040**