



INSTRUCTION SHEET K6855826

Three components in the 62TE park system received upgrades as a running change in MY 2013. These components are:

- Park Pawl – wider tooth
- Park Guide – larger diameter, different style pin
- Case – wider slot for park pawl

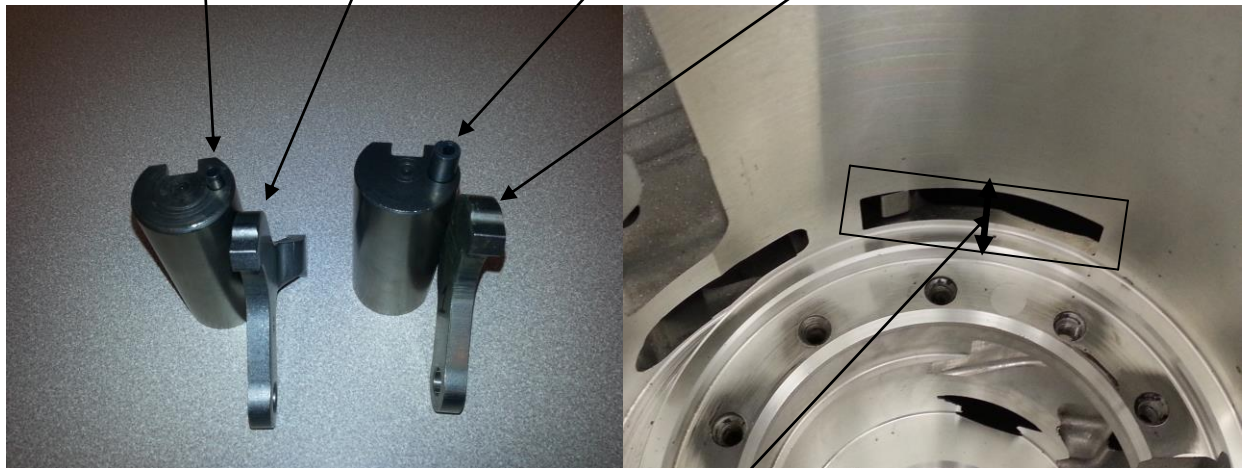
If kept together - the main case, park guide and park pawl can service prior MY applications.

DO NOT MIX PARTS BETWEEN MODEL YEARS.

2013 and prior MY Guide and Pawl	Running 2013 and newer MY Guide and Pawl
Guide Assembly – Park Sprag (5 mm cut roll pin) <ul style="list-style-type: none">• 68017159AA (includes snap ring)	Guide Assembly– Park Sprag (8.2 mm spiral pin) <ul style="list-style-type: none">• 68236612AA (includes snap ring)
Pawl – Park Sprag (8 mm wide tooth) <ul style="list-style-type: none">• 05078743AA	Pawl – Park Sprag (9.9 mm wide tooth) <ul style="list-style-type: none">• 4800910AA

Always refer to STARPARTS for latest INFORMATION.

Original 5 mm cut cut roll pin and 8 mm Park Pawl. New 8.2 mm spiral roll pin and new 9.9 mm Park Pawl.



Park Pawl slot width in case: Original width was approx. 11.8 mm, New width is approx. 13.8 mm