



**Audio System Upgrade Package**  
2008-2010 Chrysler 300C  
2008-2010 Dodge Charger  
2008 Dodge Magnum  
2008-2011 Dodge Challenger  
2008-2011 Dodge Avenger (Non Convertible Only)  
2007-2010 Chrysler Sebring (Non Convertible Only)  
2011 Chrysler 200  
**Operating and Installation Instructions**

**Congratulations, you just purchased one of the most sophisticated 32 bit digital audio amplifiers available today. Fortunately, all the complexity and sophistication is on the inside and all you have to do is plug it in. When you're finished with the installation and turn it on, you will immediately notice an improvement in sound quality.**

**This amplifier is devised to work with the complete line of speaker and subwoofer upgrades developed in conjunction with Kicker®. Because each is application specific, please see your dealer or contact the Direct Connection Hotline at 1-888-528-HEMI to find the additional components specifically designed for your vehicle to maximize your listening experience.**

**SPECIFICATIONS**

<b>RMS Power at 4 Ohms:</b>	<b>28 W x 8</b>
<b>RMS Power at 2 Ohms</b>	<b>46 W x 8</b>
<b>Frequency Response</b>	<b>20 Hz – 21K Hz</b>
<b>Signal to Noise Ratio</b>	<b>95 dB</b>
<b>THD at Rated RMS Power</b>	<b>1.0 %</b>

**FEATURE DESCRIPTION**

**Driver Selectable Surround**

**That's not all your new amplifier has to offer. Another benefit is DSS (Driver Selectable Surround) mode. DSS can be turned on and off with the volume control knob on the radio or steering wheel volume control buttons. DSS will give your music a new dimension by simulating a surround sound feel. You can enable DSS by turning the volume control knob on the radio up two increments and then down two increments within three seconds. You will hear a momentary attenuation in the sound when the system switches to DSS mode. You can also enable DSS with the steering wheel volume control buttons in the same way. Press the volume up button twice and then the volume down button twice within three seconds. To disable DSS just repeat the same process.**

**Note: the balance is automatically controlled when you are in DSS mode. In fact, an easy way to tell whether you are in DSS or non-DSS mode is to try the balance control. DSS can be utilized with any source - i.e., Sirius® satellite radio, regular radio, and compact disc player.**



**Audio System Upgrade Package**  
2008-2010 Chrysler 300C  
2008-2010 Dodge Charger  
2008 Dodge Magnum  
2008-2011 Dodge Challenger  
2008-2011 Dodge Avenger (Non Convertible Only)  
2007-2010 Chrysler Sebring (Non Convertible Only)  
2011 Chrysler 200  
**Operating and Installation Instructions**

---

## **KMS-1® or Kicker® Mobile Surround**

While DSS is exciting even more so is the other capability of your amplifier. If your vehicle is equipped with factory VES® (Video Entertainment System) you can enjoy the benefits of KMS-1® (Kicker Mobile Surround).

KMS-1 is enabled automatically when the Radio is put into the VES® mode. This feature offers the ultimate listening experience by providing surround sound uniquely equalized for your interior space.

**Note:** while in KMS mode the system automatically sets balance and fade to provide the optimal surround experience.

KMS® is available only if when a DVD is in the player and the radio mode is set to VES®.

*For information or additional assistance please contact directly via the Direct Connection hotline at 1-888-528-HEMI (4364).*



**Audio System Upgrade Package**  
2008-2010 Chrysler 300C  
2008-2010 Dodge Charger  
2008 Dodge Magnum  
2008-2011 Dodge Challenger  
2008-2011 Dodge Avenger (Non Convertible Only)  
2007-2010 Chrysler Sebring (Non Convertible Only)  
2011 Chrysler 200  
**Operating and Installation Instructions**

**CONTENTS:**

1EA. EIGHT CHANNEL AMPLIFIER  
1EA. INSTRUCTIONS

P/N MPCAN030AC  
P/N RBI77KICK30AC

**TOOLS REQUIRED:**

\*Torx® T15 Screwdriver\*Torx® T25 Screwdriver\*Panel Removal Tool \* Phillips Screwdriver\*10mm Nut Driver  
\*Ratchet\*6 Inch Extension\*10mm Socket\*7mm Wrench

**300C, Charger, Magnum, Challenger Eight Channel Amp Installation Instructions**

1. Using a panel removal tool gently pry the trim piece loose between the driver's side front door and the end of the dash. Fig. 1
2. Using the panel removal tool pry up on the threshold/kick panel along the bottom of the driver's side front door opening and remove the panel. Fig. 2



3. Using a Phillips screwdriver remove the two screws securing the dash panel below the steering column. One screw is located next to the door opening and one along the bottom next to the hood release lever. Fig. 3 and 4

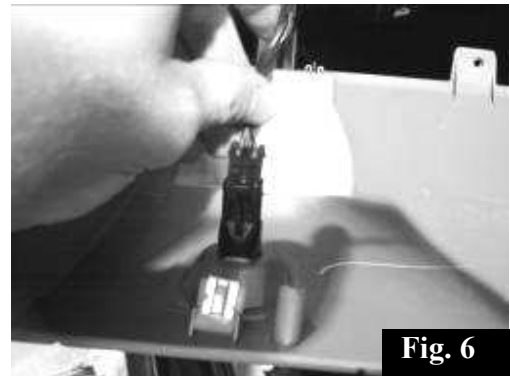




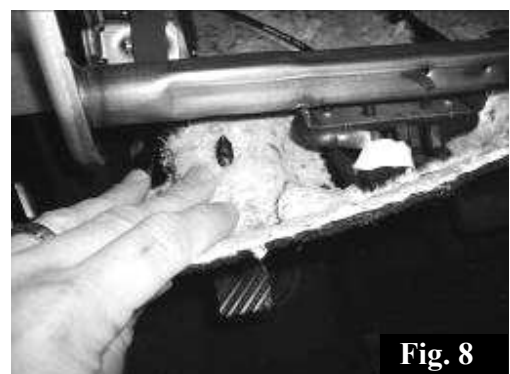
**Audio System Upgrade Package**  
2008-2010 Chrysler 300C  
2008-2010 Dodge Charger  
2008 Dodge Magnum  
2008-2011 Dodge Challenger  
2008-2011 Dodge Avenger (Non Convertible Only)  
2007-2010 Chrysler Sebring (Non Convertible Only)  
2011 Chrysler 200  
**Operating and Installation Instructions**

**300C, Charger, Magnum, Challenger Eight Channel Amp Installation Instructions continued**

4. Gently pull the lower dash panel loose to release the metal fasteners. Fig. 5
5. Disconnect the wiring for the trunk release button. (Charger and 300C only) Fig. 6
6. Leave the parking brake cable attached and swing the panel to the side.



7. Using a 10mm nut driver remove the four bolts securing the metal panel below the steering column and remove. Fig. 7
8. Push down on the fabric panel under the dash to release the two plastic fasteners and remove. Fig. 8

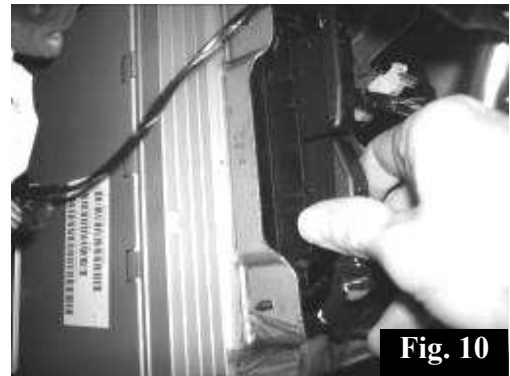
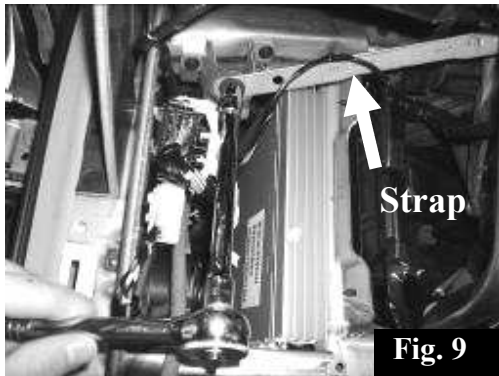




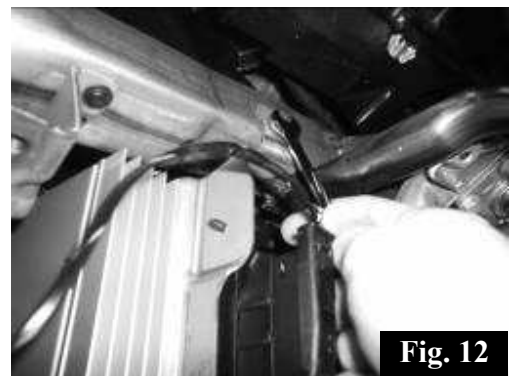
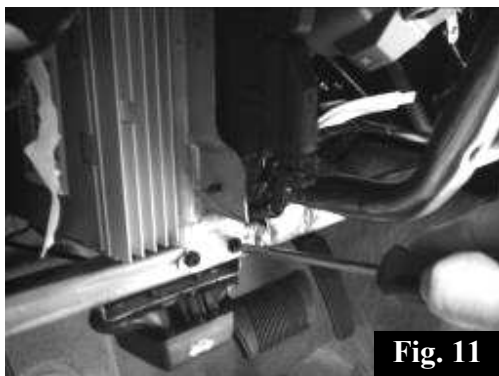
**Audio System Upgrade Package**  
2008-2010 Chrysler 300C  
2008-2010 Dodge Charger  
2008 Dodge Magnum  
2008-2011 Dodge Challenger  
2008-2011 Dodge Avenger (Non Convertible Only)  
2007-2010 Chrysler Sebring (Non Convertible Only)  
2011 Chrysler 200  
**Operating and Installation Instructions**

**300C, Charger, Magnum, Challenger Eight Channel Amp Installation Instructions continued**

9. Using a ratchet, a six inch extension and a 10mm socket remove the two bolts securing the metal strap in front of the amplifier. There is one bolt next to the steering column and one next to the amplifier. Fig. 9
10. Disconnect the two black connectors from the transmission shift control module mounted on the amplifier bracket. Fig. 10



11. Using a Phillips screwdriver remove the two screws securing the bottom of the amplifier mounting bracket. Fig. 11
12. Using a 7mm wrench remove screw securing the top of the amplifier mounting bracket. Fig. 12





**Audio System Upgrade Package**  
2008-2010 Chrysler 300C  
2008-2010 Dodge Charger  
2008 Dodge Magnum  
2008-2011 Dodge Challenger  
2008-2011 Dodge Avenger (Non Convertible Only)  
2007-2010 Chrysler Sebring (Non Convertible Only)  
2011 Chrysler 200  
**Operating and Installation Instructions**

**300C, Charger, Magnum, Challenger Eight Channel Amp Installation Instructions continued**

13. Rotate the amplifier inside the dash cavity as shown in Fig. 13 and pull it out of the dash.
14. Disconnect the two connectors on the amplifier. Fig. 14



15. On a workbench using a Torx® T15 screwdriver remove the two screws securing the transmission shift control module to the amplifier bracket. Fig. 15
16. Using a Torx® T25 screw driver remove the three screws securing the amplifier bracket to the amplifier. Fig. 16
17. Attach the amplifier bracket to the upgrade amplifier and replace the screws.
18. Reattach the transmission shift control module.
19. Reinstall all previously removed parts in reverse order.





**Audio System Upgrade Package**  
2008-2010 Chrysler 300C  
2008-2010 Dodge Charger  
2008 Dodge Magnum  
2008-2011 Dodge Challenger  
2008-2011 Dodge Avenger (Non Convertible Only)  
2007-2010 Chrysler Sebring (Non Convertible Only)  
2011 Chrysler 200  
**Operating and Installation Instructions**

**Tools Required:**

\*Ratchet\*12 Inch Extension\*Swivel Attachment\*10mm Socket\*Torx®T25 Screwdriver

**Dodge Avenger Chrysler Sebring / 200 Eight Channel Amplifier Installation Instructions**

1. Open the glove compartment and squeeze both sides of the compartment inward to allow the stops to come past the dash. Rotate the compartment all the way down and remove. Fig. 17
2. Push down on the fabric panel under the dash to release the two plastic fasteners and remove. Fig. 18



**Fig. 17**

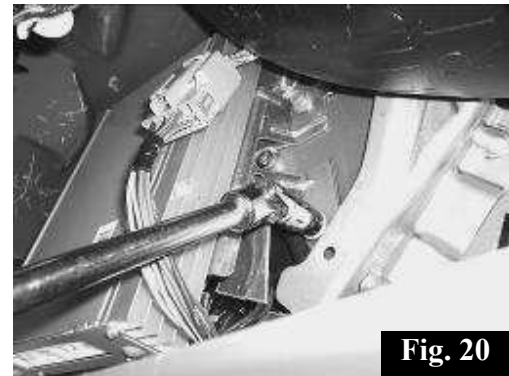


**Fig. 18**

3. Locate the amplifier above the passenger side kick panel and remove the connector that is attached to the amplifier bracket. Fig. 19
4. Disconnect the amplifier wiring.
5. Using a ratchet, a twelve inch extension and a swivel attachment, remove the three 10mm bolts securing the amplifier bracket. (two in front and one in back) Fig. 20



**Fig. 19**



**Fig. 20**



**Audio System Upgrade Package**  
2008-2010 Chrysler 300C  
2008-2010 Dodge Charger  
2008 Dodge Magnum  
2008-2011 Dodge Challenger  
2008-2011 Dodge Avenger (Non Convertible Only)  
2007-2010 Chrysler Sebring (Non Convertible Only)  
2011 Chrysler 200  
**Operating and Installation Instructions**

---

6. Rotate the amplifier and pull it through the glove compartment hole. Fig. 21
7. On a workbench using a Torx® T25 screwdriver remove the four screws securing the amplifier bracket to the amplifier. Fig. 22
8. Attach the amplifier bracket to the upgrade amplifier and replace the screws.
9. Reinstall all previously removed parts in reverse order

