



DODGE RAM GRILLE GUARD – GRILLE/ BRUSH GUARD INSTALLATION INSTRUCTIONS

COMPONENTS			HARDWARE		
<u>ITEM#</u>	<u>QTY</u>	<u>DESCRIPTION</u>	<u>ITEM#</u>	<u>QTY</u>	<u>DESCRIPTION</u>
1	2	side plate	13	4	1/2 ² -13 X 1 1/2 ² hex bolt (Grille only)
2	2	cross tube	14	8	1/2 ² -13 X 1 1/4" hex bolt
3	1	side cover (driver)	15	6	1/2 ² lock washer (Grille only)
4	1	side cover (passenger)		2	1/2 ² lock washer (Grille/Brush only)
5	2	stiffener/light bracket	16	6	1/2 ² lock nut
6	2	heavy washer with 3/8 ² hole	17	16	1/2 ² SAE flat washer
7	2	5/16" X 1" aluminum spacer	18	2	3/8 ² -16 X 1 1/4 ² button head screw (Grille only)
8	1	frame mount bracket (driver)		2	3/8 ² -16 X 1 1/2 ² button head screw (Grille/Brush only)
9	1	frame mount bracket (passenger)	19	2	3/8 ² lock nut
10	1	extension bracket (driver)	20	2	3/8 ² SAE flat washer
11	1	extension bracket (passenger)	21	2	1/4 ² -20x1 ² hex bolt
12	2	nut plate	22	6	#8 X 3/4 ² pan head screw (Grille only)
			23	2	1/4 ² expanding insert nut
			24	2	1/4 ² internal tooth lock washer
			25	2	1/2 ² -13 X 1 1/4" hex bolt SS
			26	2	1/2 ² SAE flat washer SS
			27	2	1/2 ² lock nut SS

Hardware Bag contents: 6, 7, 13, 14, 15, 16, 17, 18, 19, 20, 21, 22, 23, 24

Hardware Box contents: 5, 8, 9, 10, 11, 12

TOOLS REQUIRED

measuring tape	1 ² hole saw	ratchet	3/4 ² socket
level	drill motor	11/16 ² deep socket	3/4 ² wrench
slotted screw driver	utility knife	7/16 ² socket	25/64 ² drill bit

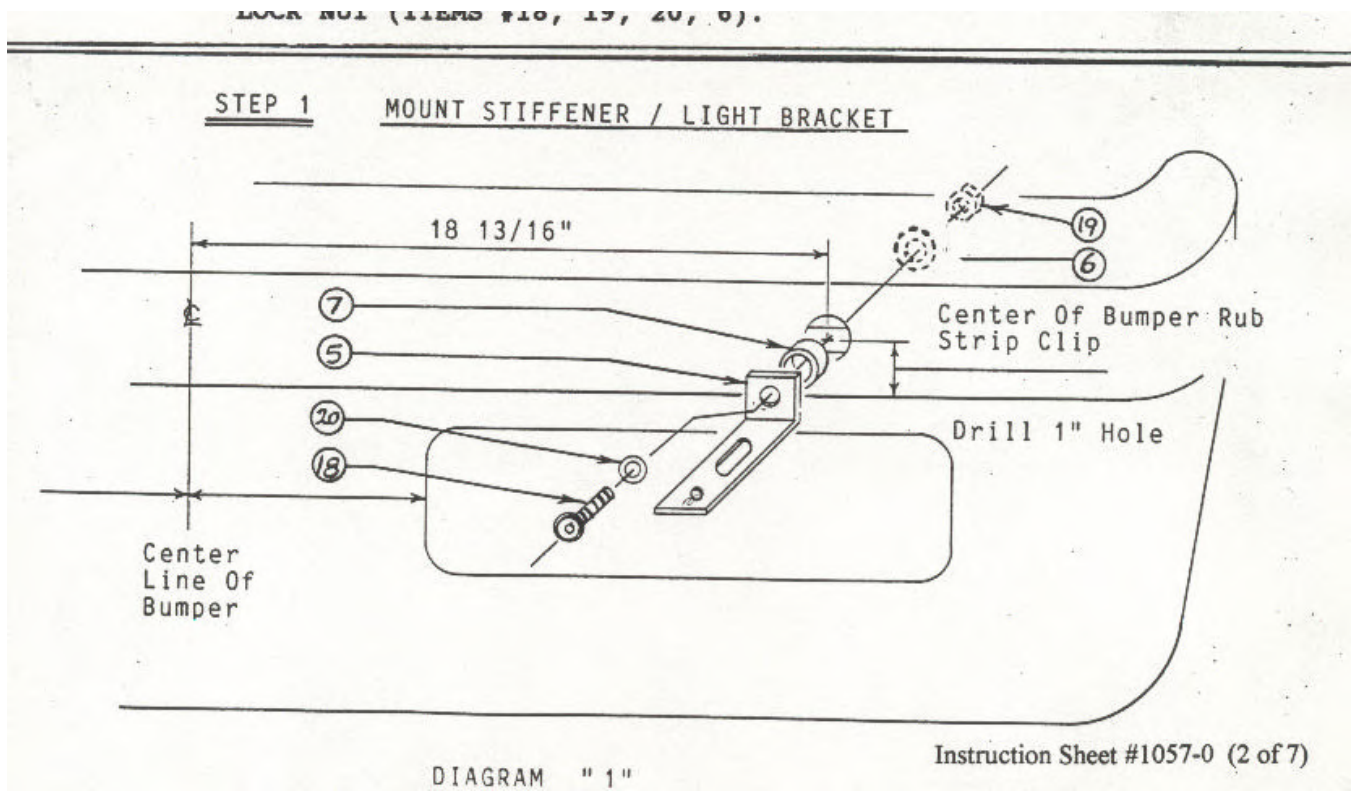
NOTE: Tow hooks and brackets may be removed for this installation

CAUTION: Please ensure to follow specified torque values. Failure to do so may result in damage to the part and/or vehicle.

STEP 1 Mount Stiffener/Light Bracket (see diagram 1)

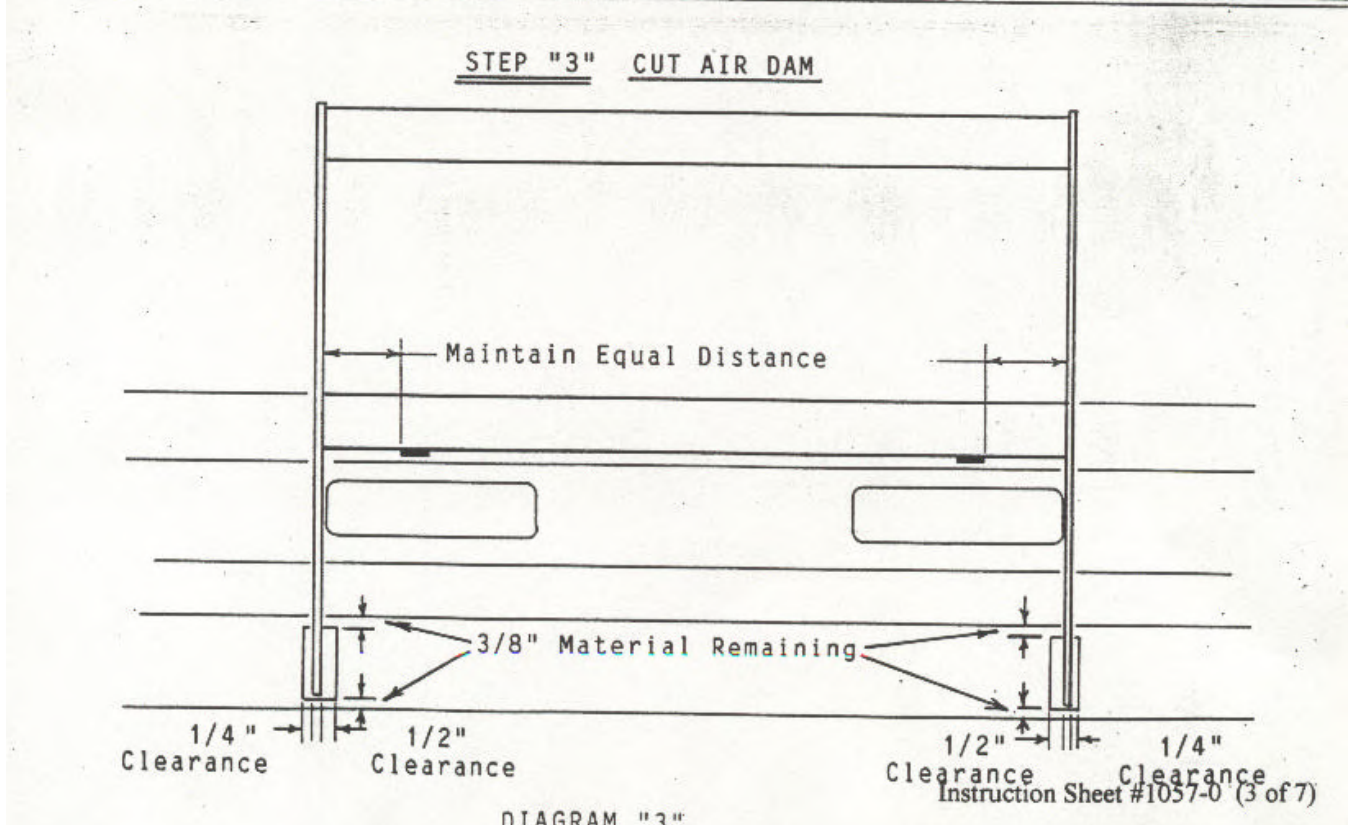
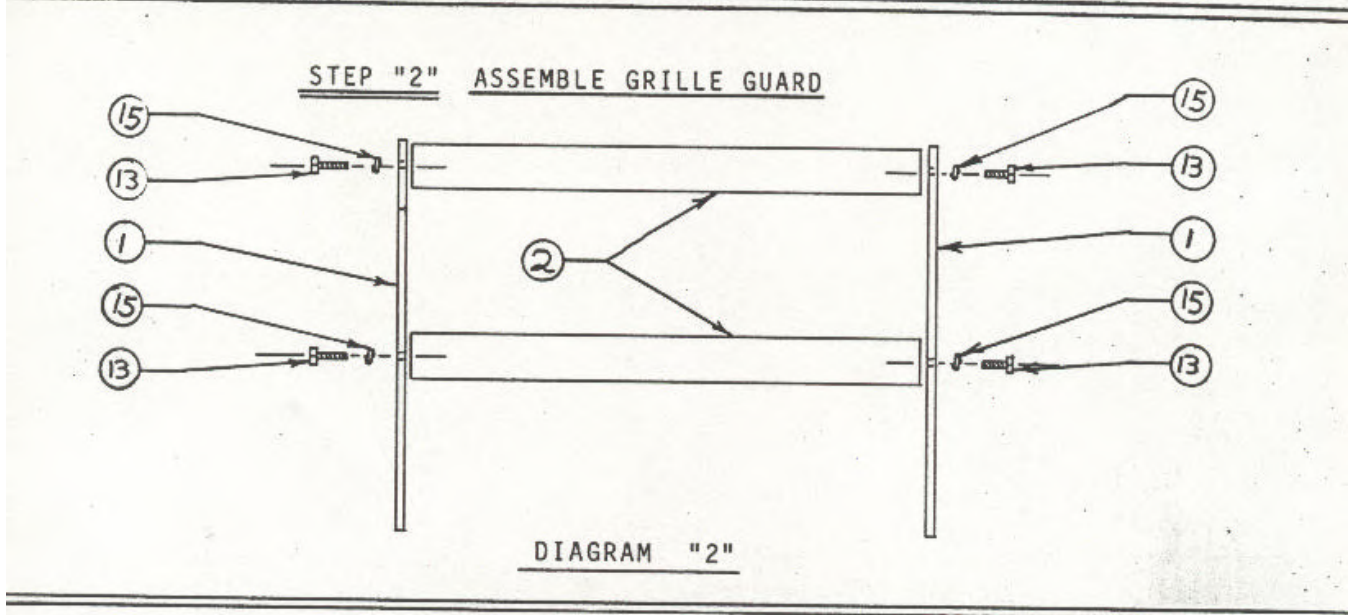
NOTE: Two stiffener/light brackets are fastened to the front bumper on top of the bumper rub strip. Holes must be drilled through this cap. To obtain proper location, follow these steps and see diagram 1.

1. Find the center of the bumper by referencing the large cutouts below the rub strip. Using a level, mark the center of the bumper on the front face of the rub strip with a pencil.
2. From this centerline, make another mark on each side of the centerline at 18 13/16".
3. At this location, the rub strip is fastened to the bumper with plastic clips through square slots in the bumper. Pry the bottom edge up slightly with a screwdriver and take a dimension from the bottom of the plastic clip to the bottom of the rub strip. Add 1/4" to this dimension and measure up from the bottom of the rub strip. With a pencil, make a mark at this point intersecting previous point.
4. Using a 1" hole saw on a drill motor, drill a hole through the bumper rub strip.
5. Place a 5/16"x1" spacer (item 7) in this cutout.
6. Mount stiffener bracket (item 5) to the bumper using 3/8"x1 1/4" button head bolt, 3/8" flat washer, heavy washer and 3/8" lock nut (items 6,18,19, 20).



STEP 2: Assemble Grille Guard (For Assemblies Without Brush Guard)

1. Assemble grille guard side plates to cross tubes using $\frac{1}{2}$ "x $\frac{1}{2}$ " hex bolts and $\frac{1}{2}$ " lock washers.
2. Place assembled grille guard on a flat surface and tighten $\frac{1}{2}$ " bolts. Do not torque to final specification at this time.



STEP 3: Cut Air Dam (see diagram 3)

1. Place assembled grille guard on the mounted stiffener brackets so the lower cross tube rests on the stiffener brackets.
2. Center the grille guard on the stiffener brackets by maintaining the same dimension between the inside of the side plate and the stiffener bracket on both driver and passenger sides of the grille guard.
3. With grille guard centered on stiffeners, the lower leg of the side plates will touch the plastic air dam under the bumper. Mark the air dam with a pencil on both sides of the side plate for driver and passenger sides.
4. From these marks, make another mark $\frac{1}{2}$ " inward toward the center of the truck from the inside line. Make another mark $\frac{1}{4}$ " toward the outside of the truck from the outside.
5. From these new lines, use a level and a pencil to draw these lines from the bottom of the air dam to the top.
6. Using a sharp utility knife, cut out this marked slot, leaving $\frac{3}{8}$ " of material on the top and bottom of the air dam.

STEP 4: Mount frame mount brackets (see diagram 6)

NOTE: The front bumper is bolted to the frame using 3 bolts on each bumper bracket. To avoid losing bumper position, frame mount brackets should be mounted one side at a time.

1. Remove the 3 bolts holding the driver side of the bumper to the frame. Retain all nuts and bolts.
2. Position the driver side frame mount bracket (item 8) against the outside of the frame so the flange with 2 slots is facing toward the outside of the vehicle.

NOTE: If the truck has tow hooks, the frame mount bracket is mounted to the outside surface of the tow hook mounting plate.

3. Replace the double bolt plate through the frame from the inside out.
4. Replace the single bolt in its original position.
5. Use a $\frac{1}{2}$ "x $1\frac{1}{4}$ " hex bolt, flat washer and lock washer (items 14,17 & 15) and place them through the third slot in the frame mount bracket. Place the nut plate (item 12) through a hole in frame directly behind bracket and thread $\frac{1}{2}$ "x $1\frac{1}{2}$ " hex bolt into nut on this plate.
6. Tighten all bolts and nuts. Do not torque hardware at this time. Minor adjustments may be required.
7. Repeat all steps for passenger side.

STEP 5: Mount Extension Bracket (see diagram 6)

1. Place driver side extension bracket (item 10) under frame mount bracket (item 8). The long arm of this bracket will extend through the slot cut in the air dam in step 3.
2. Align slots in both brackets and fasten with $\frac{1}{2}$ "x $1\frac{1}{4}$ " hex bolts, flat washers and lock nuts (items 14,16 & 17).
3. Tighten bolts. Do not torque at this time.

STEP 6: Mount Grille Guard (see diagrams 4 & 5 & 6)

NOTE: If driving lamps or fog lamps are to be installed, they should be mounted to stiffener/light brackets before grille guard is mounted. Maximum width of light that may be used is 8".

1. Place assembled grille guard on stiffener brackets. Allow bottom legs of side plates to pass through the cutouts in the air dam. The side plates mount on the outside surface of the extension brackets
2. Fasten side plates to extension brackets using ½"x1½" hex bolts, flat washers and lock nuts (items 13,16 & 17). Tighten bolts enough to hold grille guard in position.
3. Center grille guard on truck. For best appearance, the grille guard should look centered in relation to the vehicle's grille.
4. Adjust grille guard in or out to obtain a gap of approximately 1" between the inside edge of the side plates and the bumper.
4. Final orientation of cross tubes should be done at this time. This is done visually by looking straight at the grille guard at the same level as the cross tubes. These tubes should appear horizontal and parallel with the truck grille. Torque ½" cross tube bolts to 12 ft-lbs.

NOTE: Do not exceed specified torque.

6. Ensure proper clearance between grille guard and truck hood when hood is opened.
7. Mark hole position through stiffener bracket onto lower cross tube.
8. Pull grille guard assembly forward enough to center punch marks and drill with a 25/64" drill bit.
9. Tap expanding insert nuts (item 23) into drilled holes and reposition grille guard on stiffener bracket.
10. Fasten stiffener bracket to cross tube using ¼"x1" hex screws and internal tooth washers (items 21 & 24).
11. Torque all ½" bolts on mounting brackets at this time to 57 ft-lbs. ¼" bolts should be torqued to 10 ft-lbs.

STEP 7: Mount Side Covers

1. Place plastic side covers (items 3 & 4) over side plates.
2. Fasten each side cover with three #8x¾" pan head screws (item 22).

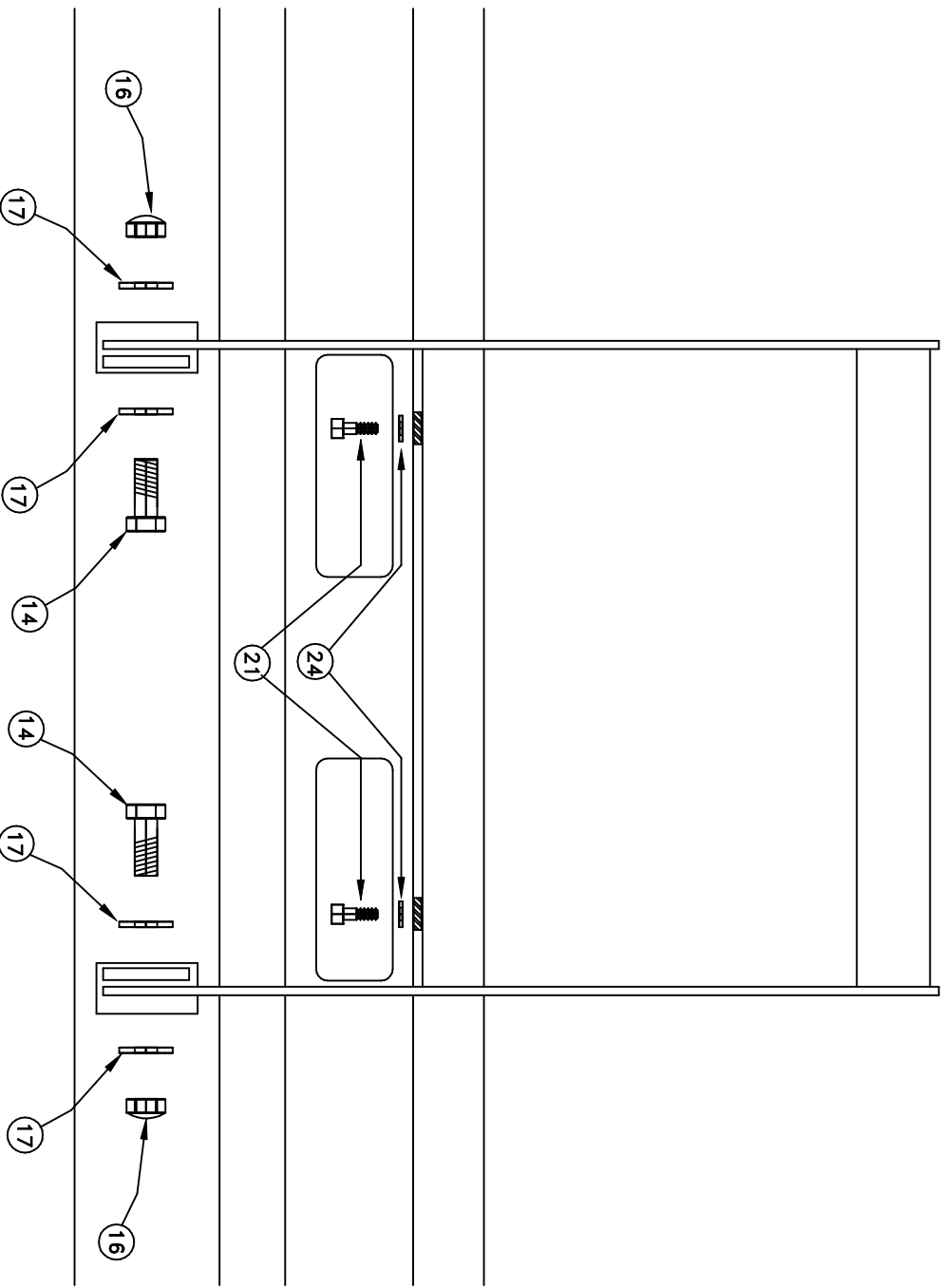


DIAGRAM 4

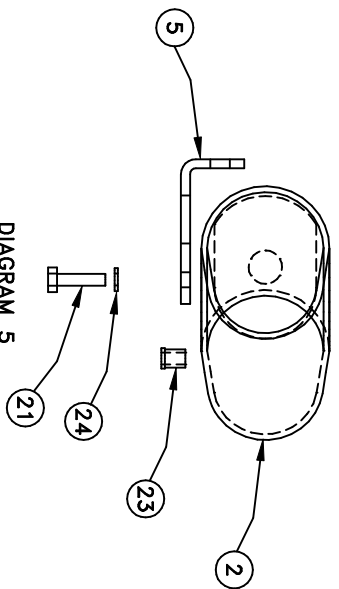


DIAGRAM 5

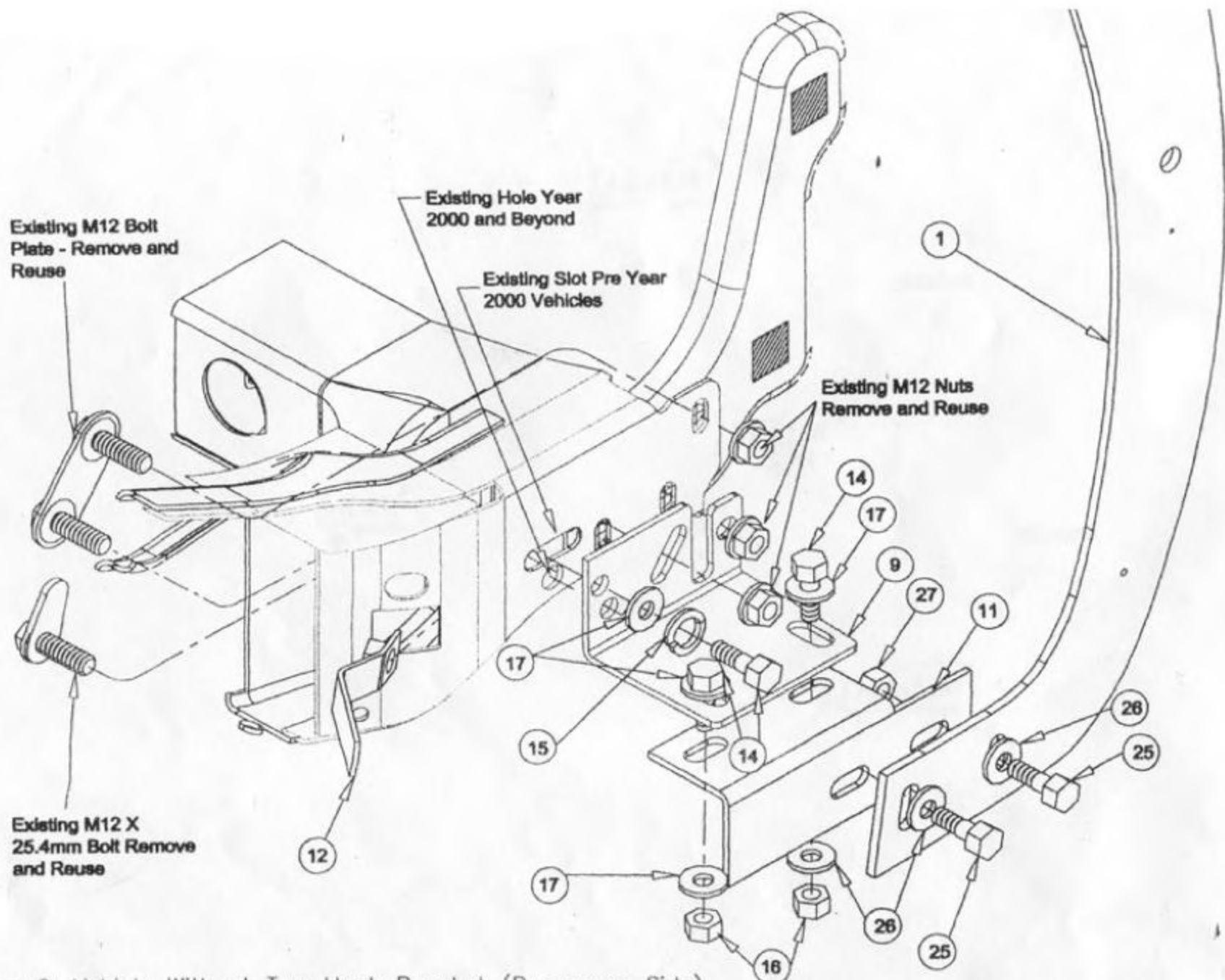


Diagram 6: Vehicle Without Tow Hook Bracket (Passenger Side)