

**EVS II & KEYLESS
ENTRY**

Installation Instructions ***for EVS II Security and Keyless Entry Systems***



Note: It is recommended that this installation take place prior to rustproofing.

The individual delivering the vehicle should review the operation of this security system and any optional features with the owner of the vehicle. Please place the operating instructions in the glove compartment with the vehicle Owner's Manual.

Please review these instructions completely before beginning the installation of this vehicle security system.

 **Mopar**
ACCESSORIES



TECHNICAL SUPPORT

Technical Support is available to authorized MOPAR dealers by calling 1-800-34-MOPAR (1-800-346-6727). Please have your dealer code number and VIN available when calling. Technical Support hours are 8:00 AM (EST) - 7:00 PM Monday - Friday and 10:00 AM - 2:00 PM Saturday. 24 hour automated assistance is available for answers to frequently asked questions by calling the FAXBACK information system at (810) 589-5297.

INS0854
Rev. A
8/98

CHRYSLER • PLYMOUTH • DODGE • JEEP • EAGLE

GET REAL. GET MOPAR.

AIR BAG WARNING!

THE AIR BAG SYSTEM IS A SENSITIVE AND COMPLEX ELECTRO-MECHANICAL UNIT. BEFORE BEGINNING THIS INSTALLATION YOU MUST FIRST DISCONNECT AND ISOLATE THE NEGATIVE BATTERY CABLE (GROUND). AFTER DISCONNECTING THE NEGATIVE BATTERY CABLE, WAIT AT LEAST ONE MINUTE BEFORE CONTINUING TO WORK ON THE VEHICLE. FAILURE TO DO SO COULD RESULT IN ACCIDENTAL DEPLOYMENT OF THE AIR BAG AND POSSIBLE PERSONAL INJURY. THE FASTENERS, SCREWS, AND BOLTS ORIGINALLY USED FOR THE AIR BAG COMPONENTS HAVE SPECIAL COATINGS AND ARE SPECIFICALLY DESIGNED FOR THE AIR BAG SYSTEM. THEY MUST NEVER BE REPLACED WITH ANY SUBSTITUTES. ANY TIME A NEW FASTENER IS NEEDED, REPLACE WITH THE CORRECT FASTENERS PROVIDED IN THE SERVICE PACKAGE OR FASTENERS LISTED IN THE PARTSBOOKS. SAFETY GLASSES SHOULD BE WORN AT ALL TIMES.

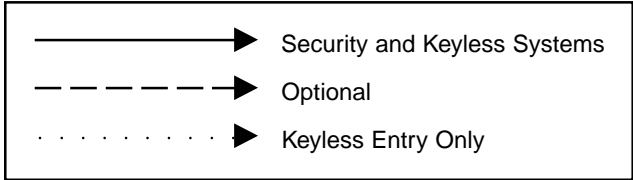
This device complies with FCC rules part 15. Operation is subject to the following two conditions: (1) this device may not cause harmful interference and (2) this device must accept any interference that may cause undesired operation.

Changes or modifications not expressly approved by the party responsible for compliance could void the user's authority to operate the equipment.

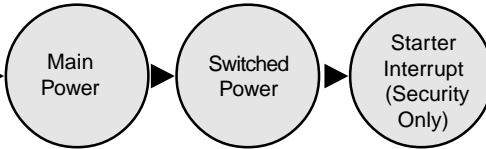
Installation Flowchart

1. Installer Preparation
Page 4

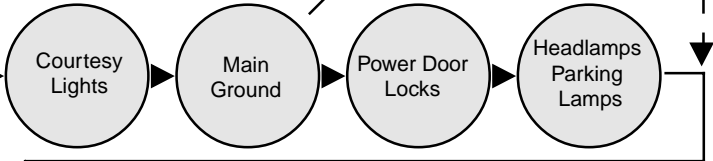
2. Vehicle Preparation
Page 5



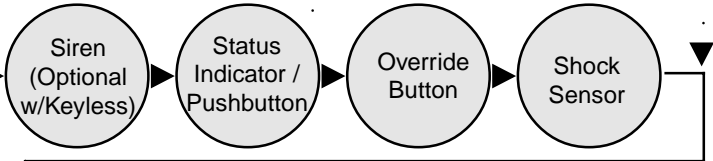
3. Main Harness Connection
Page 6



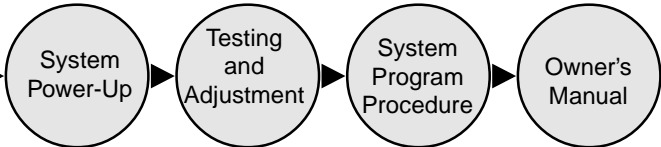
4. Secondary Harness Connections
Page 7



5. Alarm Connections
Page 8



6. System Power-Up, Test, and Adjustment
Page 11



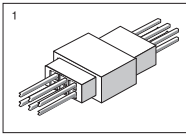
1. Installer Preparation

A. Required Tools:

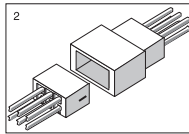
Wire cutter/strippers	Terminal extracting tool
Assorted Screwdrivers	Needle nose pliers
Assorted Nut drivers	Acid free solder (rosin core)
Voltmeter	T-15, T-20 & T-30 Torx screwdrivers
Soldering iron	

B. Connection Procedures

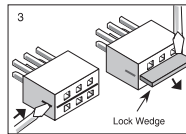
Remove and Replace Procedure



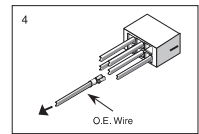
1
Locate the appropriate connector.



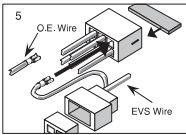
2
Separate the connector ends.



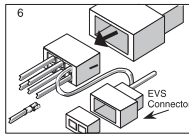
3
Remove the locking wedge.



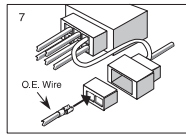
4
Remove the appropriate wire(s) by releasing the tang inside the connector with a terminal extraction tool.



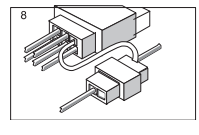
5
Insert the appropriate EVS wire into the cavity. Replace the locking wedge.



6
Plug the two connectors back together.

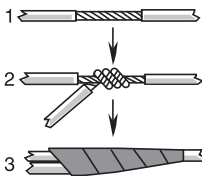


7
Insert the vehicle wire into the appropriate cavity on the EVS connector.



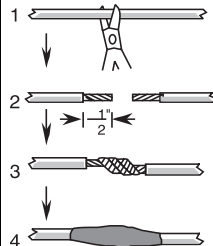
8
Insert the locking wedge into the EVS connector and plug the two mating EVS connectors together.

Center Splice Procedure



- Strip back the wire insulation.
- Twist and solder EVS wire onto the exposed wire.
- Cover with a minimum 4 wraps of tape.

Strip and Splice Procedure



- Cut wire.
- Strip back insulation $\frac{1}{2}$ " from both ends.
- Twist and solder each wire to EVS wire harness.
- Cover splice with tape or heat shrink tubing.

2. Vehicle Preparation

A. Pre Installation

1. Lower the driver's door window to avoid locking the keys in the vehicle during installation.
2. Disconnect and isolate the negative battery terminal.
3. Remove fuse from the EVS wiring harness.
4. Review the System Layout at the back of this manual.

B. Interior Preparation

1. Remove the knee blocker panel.
2. Remove the lower halves of the steering column shroud.
 - There are five (5) T-20 torx screws in the bottom of the shroud holding it in place.

3. Main Harness Connection

Replace O.E. Ignition Switch Harness with EVS Power Harness

1. Unplug the 7-way ignition switch connector from the back of the ignition switch (diagram 3.1). Carefully slice back harness tape so that 7-way ignition connector can be freely pulled about half way down the steering column.
NOTE: Be careful not to slice or pull on the airbag harness. This is the thin black shrink tubed harness.
2. Plug the EVS power harness connector A (see diagram 3.2) into the vehicle ignition switch.
3. Plug the vehicle's original 7-way ignition switch connector into connector B on the EVS power harness.
4. Bundle the ignition switch wiring harness assembly to the other O.E. steering column wiring harnesses using the supplied long tie wraps. Make sure to route harness so that the EVS 6-way module connector is near the base of the steering column.

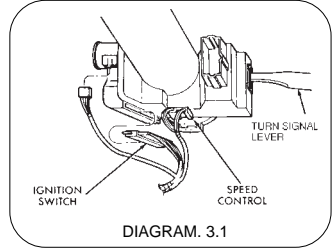


DIAGRAM. 3.1

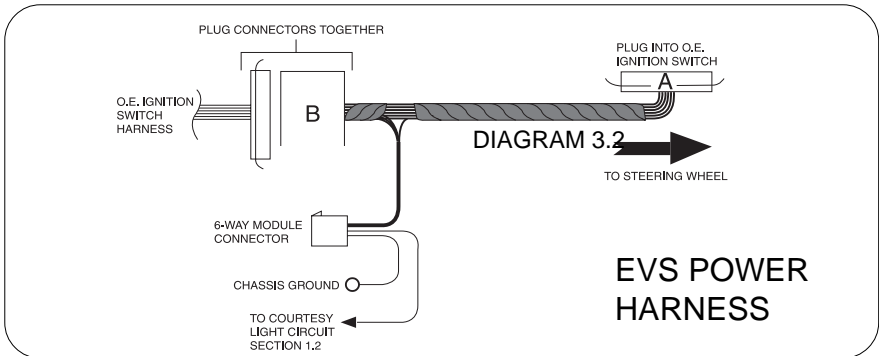


DIAGRAM 3.2

EVS POWER HARNESS

4. Secondary Harness Connection(s)

A. Courtesy Light Connection

1. Locate the C203 26-way body connector (Diagram 4.1) attached to the bottom of the 74-way instrument panel connector (left side of steering column).
2. Center splice the EVS YELLOW wire to the O.E. M2 YL wire in cavity #8 of the 26-way body connector.

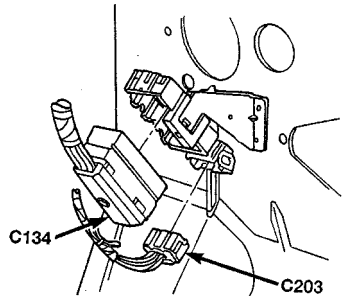


Diagram 4.1

B. Ground Connection

1. Locate a solid metal body panel or dash bracket that is grounded.
2. Verify the targeted ground point with a voltmeter.
3. Use one of the supplied sheet metal screws to attach the ground lug to the verified ground point (Diagram 4.2). Use care not to over-tighten this screw. Cover the connection point with a small amount of non-conductive grease or rust-inhibiting paint to prevent future corrosion.

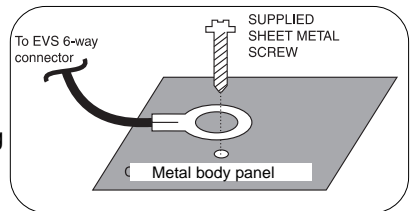


Diagram 4.2

C. Door Lock Harness

1. Pull back the vehicle side of the driver's door jamb boot to expose the 16-way connector (Diagram 4.3). Disconnect.
2. Remove the interior driver's kick panel and pull the vehicle side of the 16-way connector into the vehicle. Plug the mating 16-way connector from the EVS wire harness onto the vehicle-side 16-way connector.
3. Route the remaining EVS 16-way connector out of the door jamb hole. Plug into the door-side vehicle 16-way connector.
4. Replace the door jamb boot, ensuring that it is properly sealed.



Diagram 4.3

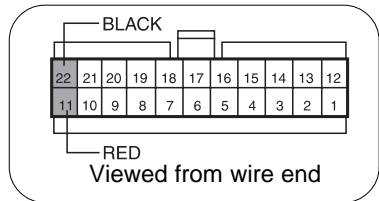
D. Headlamps / Parking Lamps

Note: An optional Headlamp / Parking Lamp kit is required for these connections. If this installation is to include the Headlamp Illumination and Flashing Parking Light option, do that installation now. Follow the instructions supplied with the kit.

5. Alarm Connections

A. Siren (Optional w/ Keyless Entry)

1. Locate the mounting location, just behind the battery on the drivers side fender well (see picture 5.1).
2. Mount the siren using the supplied 1/4" sheet metal screws.
3. Route the siren wires to the area where the hood release cable goes through the bulkhead panel.
4. From the inside of the vehicle, pop out hoodlock release cable grommet.
5. Route the siren wire harness through hoodlock release cable grommet inside the vehicle (use care not to damage the terminals on the end of the siren wires).
6. Replace the hood release cable grommet. It may be necessary to slit the grommet to properly seat it back in the firewall. Use a small amount of silicone, if necessary to completely reseal the grommet.
7. Insert the siren wires into the 22 way module connector.
 - 7.1 RED into cavity # 11.
 - 7.2 BLACK into cavity #22.



PICTURE 5.1

5. Alarm Connections

B. Multi-Function Status Indicator / Pushbutton

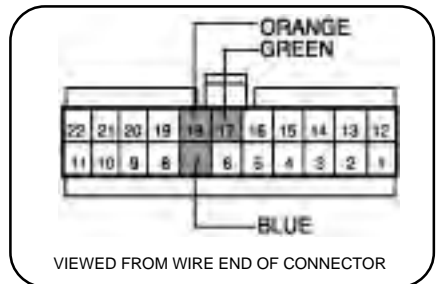
1. *Keyless Entry Systems:* Find a mounting location under the dash that is not easily seen, yet is accessible by the customer.
Security Systems: Find a mounting location for the status indicator that is visible from outside the vehicle.
2. Make sure that there is at least 2" clearance behind the selected mounting location and any vehicle components.
3. Drill a 5/16" mounting hole. Then, using a small file notch the mounting hole to accommodate the key way on the switch body.
4. Feed the status indicator wires through the mounting hole and snap the switch body firmly into the hole. Depress the switch a few times to ensure that it travels freely. If necessary, carefully enlarge the hole.
5. If necessary, slide the retaining ring over the back of the switch body.
6. Insert the status indicator wires into the 22-way module connector:

Security Systems:

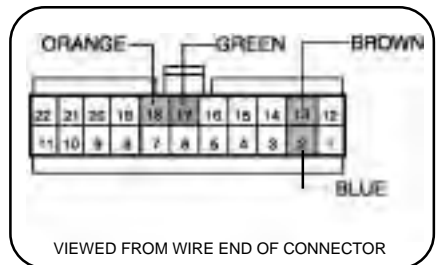
- 6.1. BLUE wire into cavity #7.
- 6.2. GREEN wire into cavity #17.
- 6.3. ORANGE wire into cavity #18.

Keyless Entry Systems:

- 6.1. BLUE wire into cavity #2.
- 6.2. GREEN wire into cavity #17.
- 6.3. ORANGE wire into cavity #18.
- 6.4. BROWN wire into cavity #13.



Status Indicator Connection - Security

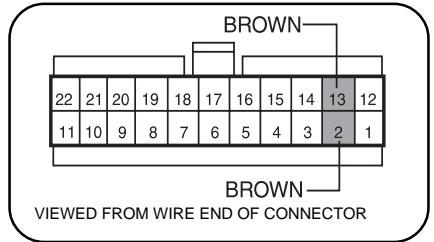


Status Indicator Connection -
Keyless Entry

5. Alarm Connections

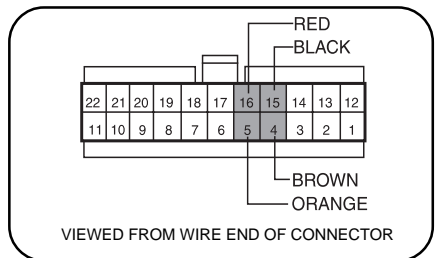
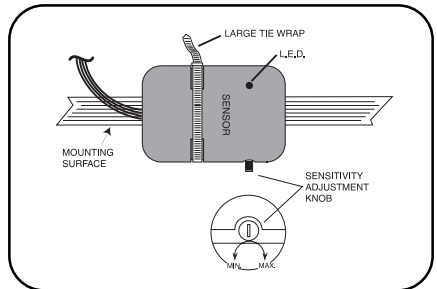
C. Emergency Override / Programming Button (Security Only)

1. Find a hidden (not plainly visible) location underdash that is accessible while sitting in the drivers seat. It is suggested that the override button be mounted in a different location for each installation.
2. Drill a 5/16" mounting hole and mount the disarm button.
3. Insert the BROWN disarm button wires into cavities #2 & 13. The disarm button wires are interchangeable.



D. Shock Sensor (Security Only)

1. Find a mounting location for the shock sensor. The sensor must adhere to a surface (or wire harness) under the instrument panel that is in solid contact with the vehicle chassis. The Ignition switch wiring harness is an excellent choice. Be sure to mount the shock sensor so that the L.E.D. can be viewed when adjusting the sensitivity.
2. Stick one of the supplied squares of adhesive tape to the bottom of the shock sensor case. Then attach the sensor to mounting surface. Use one of the supplied long tie wraps to secure sensor firmly in place.
3. Insert the shock sensor wires into the 22-way module connector:
 - a. BLACK wire into cavity #15.
 - b. BROWN wire into cavity #4.
 - c. RED wire into cavity #16.
 - d. ORANGE wire into cavity #5.



6. System Power-Up, Test, and Adjustment

A. System Power-Up

1. Re-check all connections and connectors to make sure they are properly insulated and seated with their appropriate mating connector.
2. Re-connect the vehicles negative battery terminal.
3. Replace any vehicle fuses removed during the installation.
4. Plug the 6-way (power), 8-way (door lock) and 22-way (accessory) harnesses into the EVS module.
5. Turn the ignition key to the ON position.
6. Replace the module power fuse on the 6-way harness.
7. Turn the ignition key OFF.
8. Replace the door lock fuse on the 8-way harness.

B. System Test

Before testing the system operation, make sure to roll the drivers door window down. If any of the following items fail to function properly, refer to the appropriate section in the installation manual and double check all wiring, connector pin outs and fuses. Before replacing the module or any of the systems components, contact technical service at the number listed on the front cover of this manual.

Note: The items below that are underlined apply only the EVS Security system.

✔ Operation	Troubleshooting Procedure
<p>WHEN ARMING THE SYSTEM CHECK THE FOLLOWING:</p> <p><input type="radio"/> <u>Siren chirps twice</u></p> <p><input type="radio"/> Doors lock</p> <p><input type="radio"/> <u>Parking lights flash (if equipped)</u></p>	<p>Make sure domelight is off</p> <p>All entrances must be secured</p> <p>Check connections</p> <p>Check connections</p>
<p>WHEN SYSTEM IS FULLY ARMED, CHECK THE FOLLOWING:</p> <p><input type="radio"/> <u>Status light flashes (steady rate)</u></p> <p><input type="radio"/> <u>All doors & hatch (hood and/or trunk if connected) trip alarm</u></p> <p><input type="radio"/> <u>Shock sensor trips alarm (full alarm and lite-touch)</u></p> <p><input type="radio"/> <u>Engine will not start / alarm trips</u></p> <p><input type="radio"/> <u>Manual override disarms alarm</u></p>	<p>Check connections</p> <p>Check connections</p> <p>Check and adjust sensitivity</p> <p>Check connections</p> <p>Make sure ignition is on</p>
<p>WHEN DISARMING THE SYSTEM CHECK THE FOLLOWING:</p> <p><input type="radio"/> Doors unlock</p> <p><input type="radio"/> Domelight Turns On</p>	<p>Check connections</p> <p>Check connections</p>

6. System Power-Up, Test, and Adjustment

B. System Test (cont.)

<input checked="" type="checkbox"/> Operation	Troubleshooting Procedure
AFTER THE SYSTEM HAS BEEN DISARMED (UNLOCKED), CHECK THE FOLLOWING: <input type="radio"/> Engine will start <input type="radio"/> Doors lock when ignition key is turned on and all doors are closed <input type="radio"/> Transmitter range (attempt operating system from 25-50 feet) <input type="radio"/> <u>Valet Mode (refer to Owner's Manual for valet mode operation)</u> <input type="radio"/> Trunk Release (if equipped) <input type="radio"/> Headlamp Illumination (if equipped)	Check connections Check Operating Characteristics Option Re-locate antenna Review operation procedure Review operation procedure Review operation procedure

Control Module Mounting

After all electrical connections are complete, and the system operation has been verified, use the supplied tie wraps to securely attach the control module to a solid underdash wire loom or support bracket. Make sure that the module and wiring harnesses do not in any way interfere with the brake, clutch, or the accelerator pedals.

Shock Sensor Adjustment (Security Only)

1. Close all doors and arm the system.
2. Moving around the vehicle, using an open palm slap various body panels on the vehicle.
 - A light to medium blow should cause the siren to emit a short chirp.
 - A medium to heavy impact should trip a full alarm cycle.
3. Adjust the shock sensitivity up or down as need to achieve the desired setting.
4. Re-assemble all interior components removed during the installation.

Mounting the Antenna

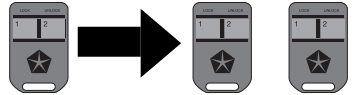
For optimum performance, the antenna must be mounted as high as possible in the vehicle.

- Do not mount the antenna and/or module in an area which is totally enclosed in metal. Keep the antenna element as straight as possible.
- Do not coil any of the remaining antenna cable. For best results, make sure that the antenna cable is completely uncoiled.
- Due to the nature of the antenna, there will be nulls in RF reception around the vehicle. By slightly moving the antenna element these RF nulls can be reduced and/or shifted in a different direction.

6. System Power-Up, Test, and Adjustment

C. Programming Additional Transmitters

Up to four transmitters can be programmed to the security or keyless entry system.



Security Systems:

1. Open the driver's door.
2. Turn the vehicle ignition to the ON position.
3. Press and hold the Emergency Override / Programming button in.
 - After approximately 15 seconds, the siren will chirp 3 times. This indicates that the system is in the Transmitter Programming Mode.
4. Release the Emergency Override / Programming button. Wait 5 seconds.
5. Press Button 1 on the new transmitter. The siren should chirp once.
6. Repeat step 5 for any additional transmitters.
7. Exit the Transmitter Programming Mode by turning the vehicle ignition off. Test all remote transmitters to ensure that they work properly.

Keyless Entry Systems:

1. Open the driver's door.
2. Turn the vehicle ignition to the ON position.
3. Press and hold the Status Indicator / Programming button in.
 - After approximately 15 seconds, the door locks will cycle once. (If the optional siren is installed, the siren will chirp three times.) This indicates that the system is in the Transmitter Programming Mode.
4. Release the Status Indicator / Programming button. Wait 5 seconds.
5. Press Button 1 on the new transmitter. The door locks should cycle once.
6. Repeat step 5 for any additional transmitters.
7. Exit the Transmitter Programming Mode by turning the vehicle ignition off. Test all remote transmitters to ensure that they work properly.

To delete a lost or stolen transmitter:

1. Follow steps 1-4 as described above.
2. Re-program the remaining transmitters as described in step 5.
 - If there is only one remaining transmitter, perform step 5 **four** times.
 - If two remaining transmitters, perform step 5 **twice** for each transmitter.

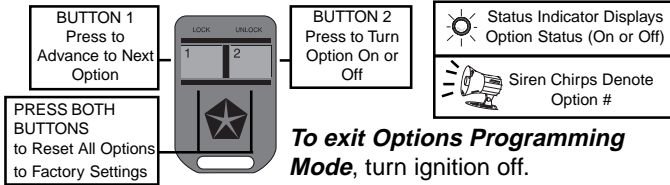


D. Programming Selectable Options

1. Enter the Transmitter Programming Mode (steps 1-4 above).
2. Security: Press and release Emergency Override / Programming Button once.
 - The siren will chirp three more times to indicate entry into the Options Programming Mode.Keyless: Press and release Status Indicator / Programming Button once.
 - The door locks will cycle once to indicate entry into the Options Programming Mode. (If equipped with optional siren, siren chirps 3 times.)
3. Press Transmitter Button 1 to select Option 1.
4. Refer to the appropriate chart (next page) to change options.

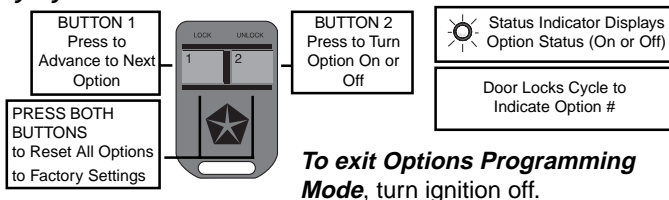
6. System Power-Up, Test, and Adjustment

Security Systems



Option #	Description	Status Indicator	
1. Ignition Lock	Doors lock with ignition on	ON	
2. Ignition Unlock	Doors unlock with ignition off	OFF	
3. Two-Vehicle Operation	Remote operates two vehicles	OFF	
4. Arm / Disarm Chirps	when arming and disarming	ON	
5. Passive Arming / Starter Lockout Timer	Arms after 5 min. ..	ON	
	(Skip if the system is to be set for Manual Arming Only)	Arms after 2 min. .	OFF
6 and 7. Arming Characteristics			
	• Passive Arming and Manual Arming	6-ON, 7-OFF	
	• Passive Starter Lockout and Manual Arming	6-OFF, 7-ON	
	• Manual Arming Only	6-OFF, 7-OFF	

Keyless Entry Systems

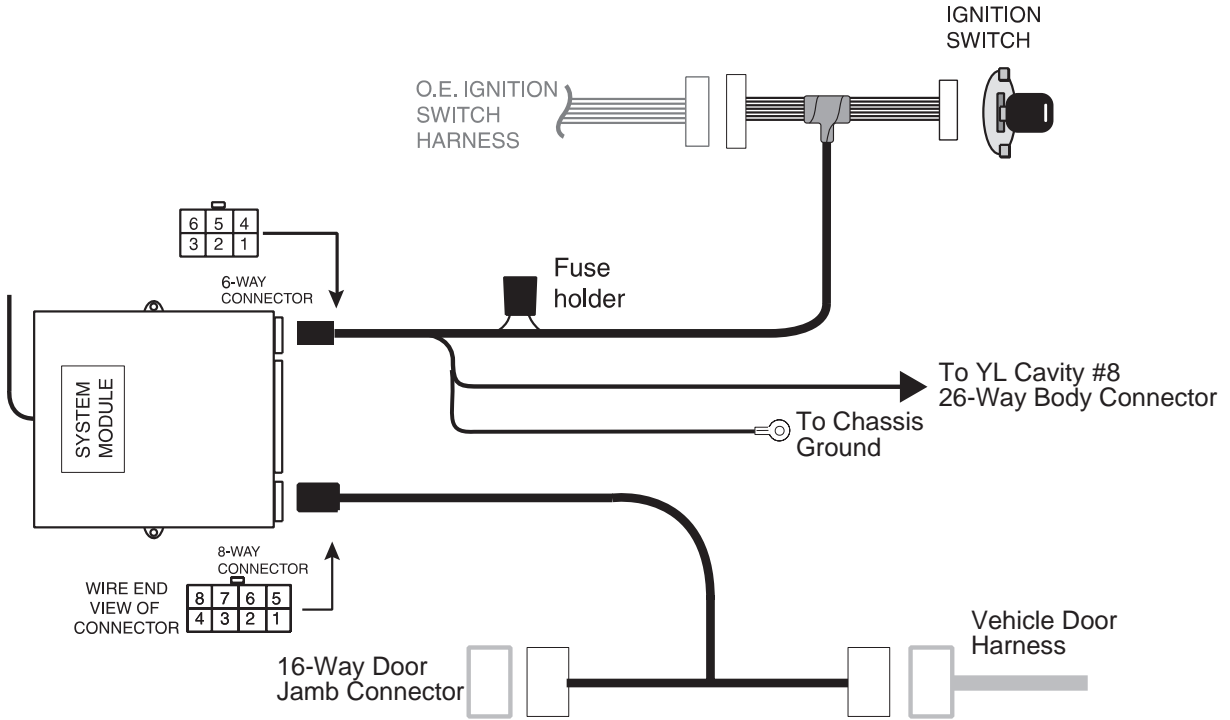


Option #	Description	Status Indicator
1. Ignition Lock	Doors lock with ignition on	ON
2. Ignition Unlock	Doors unlock with ignition off	OFF
3. Two-Vehicle Operation	Remote operates two vehicles	OFF
4. Lock / Unlock Chirps	When arming and disarming	ON

7. Updating the Owner's Manual

Mark the selected operating characteristics and any additional features in the spaces provided in the Owner's Manual. Please review these sections with your customer. Make sure your customer is aware of the following:

- Location of the Emergency Override Button (Security only)
- Procedure for obtaining additional transmitters
- System Warranty information



System Layout

