



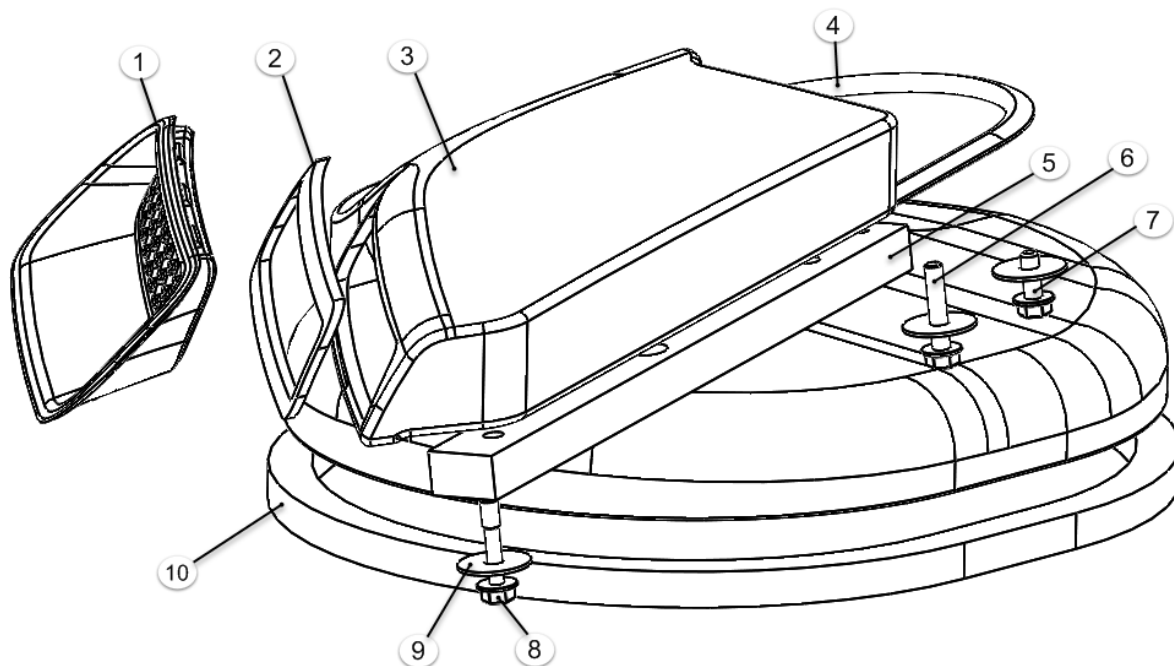
Installation Instructions

# RAM HOOD SCOOP

## 2013 - 2015 RAM 1500 5.7L

Part Number 82214741

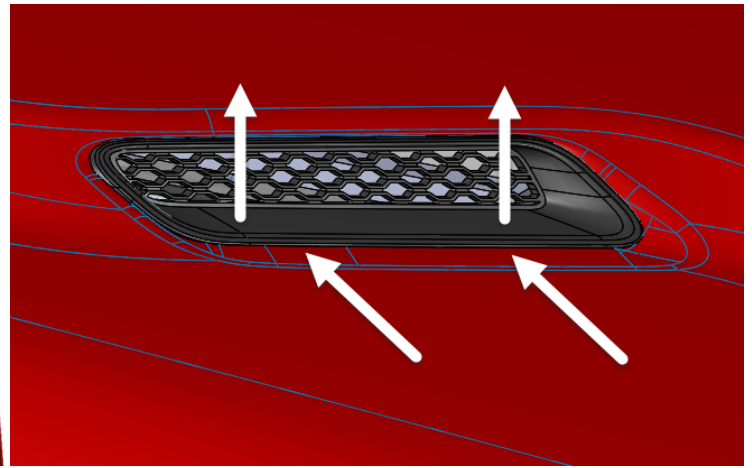
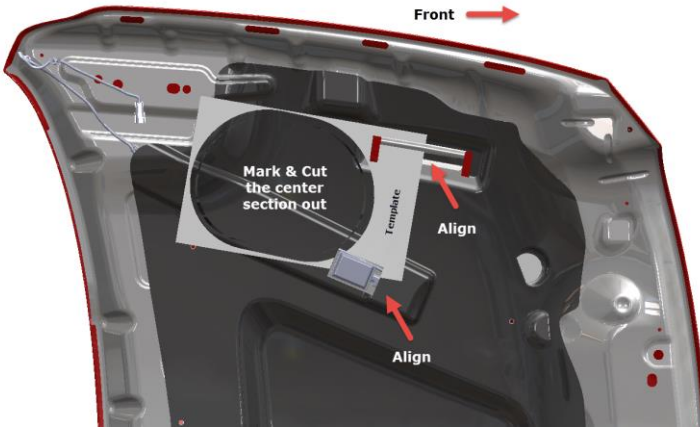
www.mopar.com



Call Out	Description	Qty.	Service Part (Y/N)	Part Number
1	BEZEL; HOOD, RAM TRUCK, RH	1	N	
2	SEAL, HOOD SCOOP, BEZEL	1	N	
3	SCOOP, DS RAM 1500 AIR INDUCTION	1	N	
4	RUBBER EDGE TRIM	1	N	
5	ALUMINUM SPACER BAR	1	N	
6	BOLT; M6 X 1.00 X 30 HEX	1	N	
7	BOLT; M6 X 1.00 X 16 HEX	1	N	
8	BOLT; M6 X 1.00 X 30 WAISTED SHANK	1	N	
9	WASHER; 1"ODX .25"ID	3	N	
10	SEAL, HOOD SCOOP, AIRBOX	1	N	

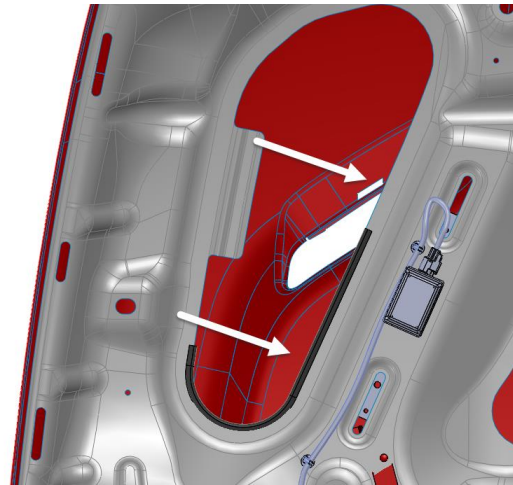
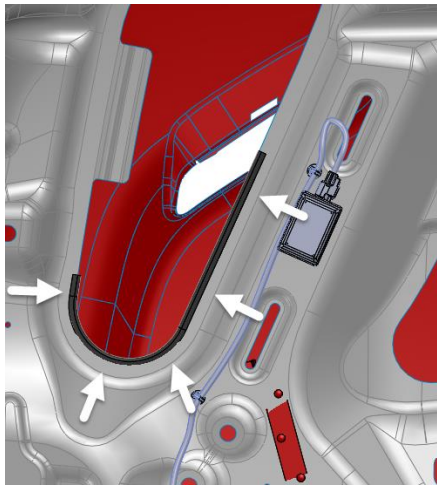
**This kit must be installed with MOPAR CAI kit # 77070023AC**

For technical assistance regarding MOPAR Cold Air Intake Systems, please call toll-free 1-888-528-HEMI (528-4364).



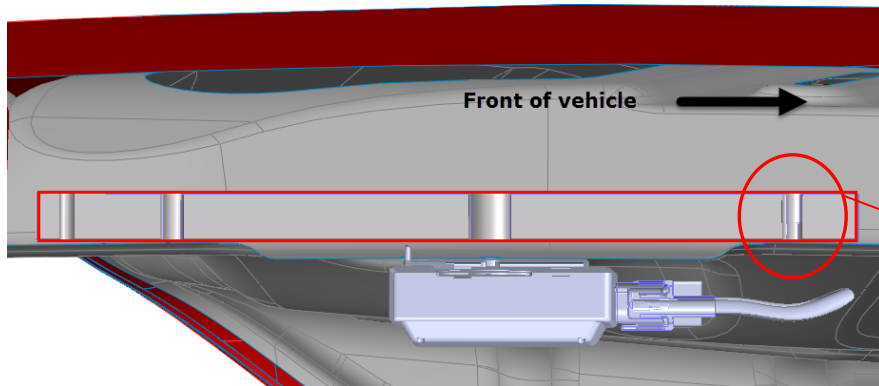
1. Cut the hood liner as shown by taping the enclosed template to hood pad and marking and then cutting it. This will allow the Scoop to fit flush against the hoods inner surface.

2. Remove the passenger side Bezel using a plastic tool to lift up from the bottom and pop out; \*\*Apply masking tape to the hood around the bezel to avoid scratching the hood

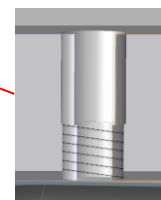


3. Install the edge trim as shown  
(bottom views shown with hood pad removed only for illustrative purposes)

4. Insert the aluminum spacer bar in the opening between the hood frame and outer shell above the hood lamp.

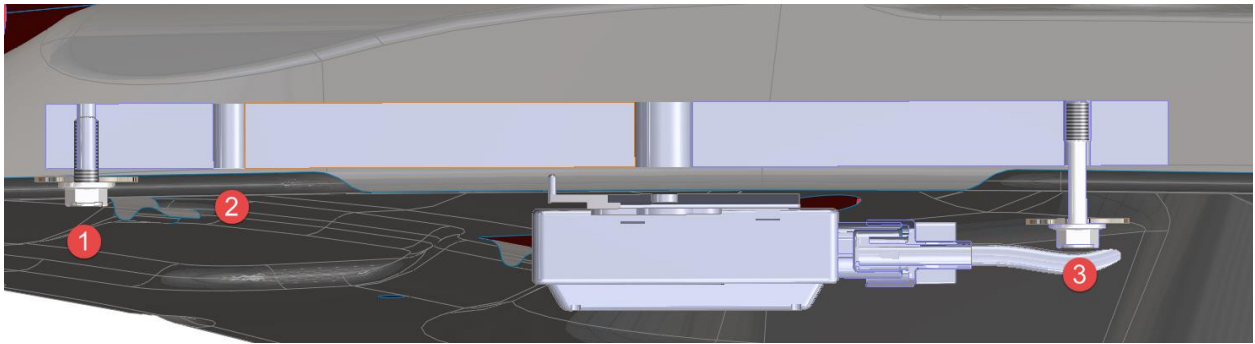


Remove hood pad retainers as necessary and peel back the hood liner to access front screw hole.



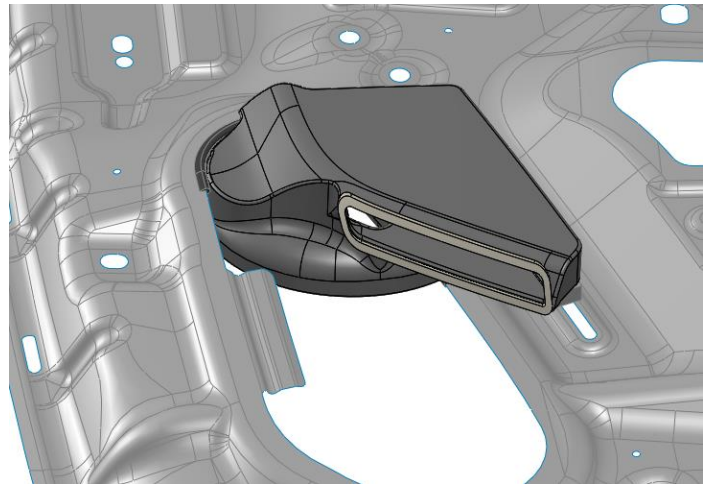
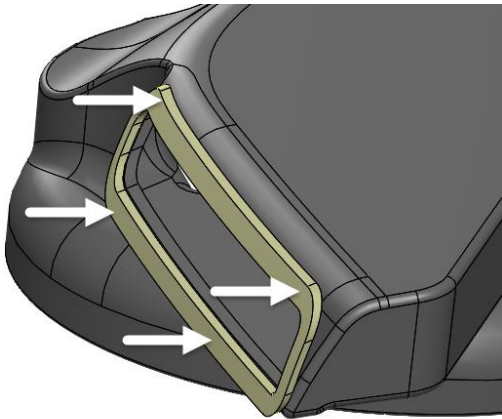
Threads should be facing down.

(side cut-away view)



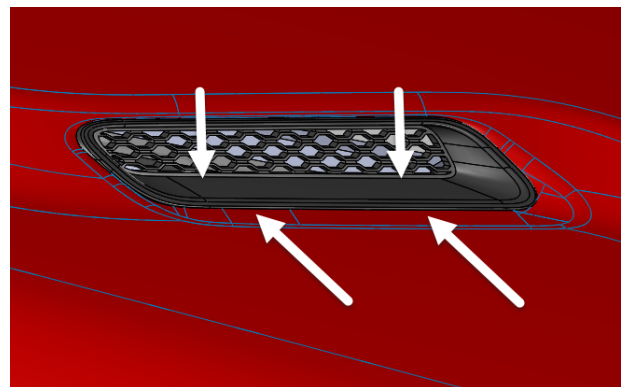
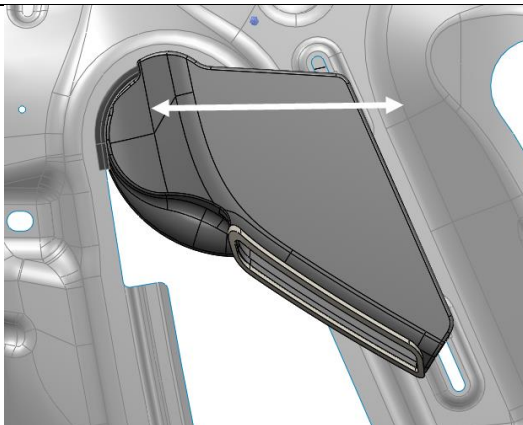
5. Install the bolt assemblies as follows:  
 (1) M6 x 16mm bolt and washer (2) Do not install yet (3) M6 x 30 waisted shank bolt and washer.

6. Snug the bolt in the #1 position but do not tighten. The waisted shank bolt in the #3 position should hang freely in its hole so as to not extend above the spacer bar.



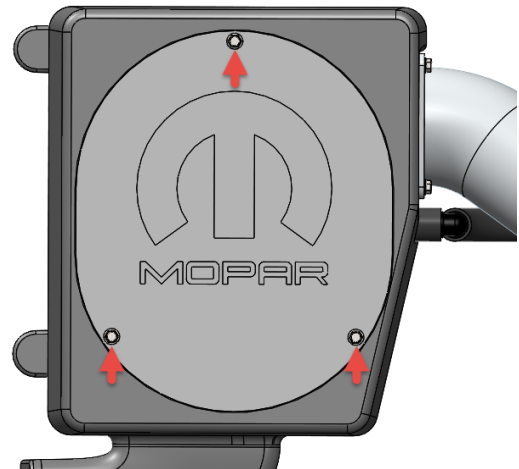
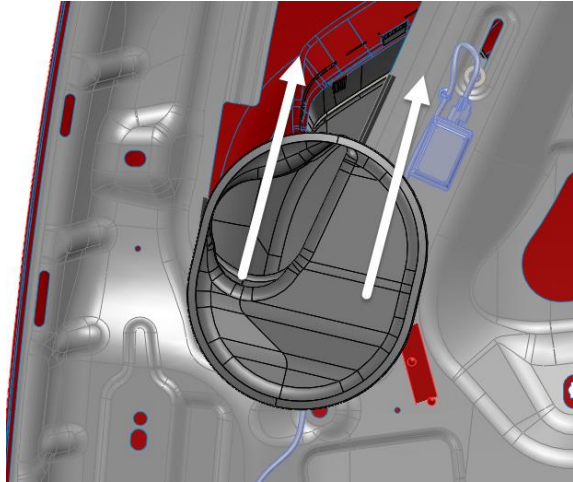
7. Thoroughly clean and prep the bezel opening of the Scoop with isopropyl alcohol or similar and firmly apply the Bezel seal to the front of the Scoop.

8. Slide the Scoop through the opening in the inner hood panel and thread the waisted shank bolt into the front insert. Do not tighten.  
 (top view with outer hood shell removed only for illustrative purposes)



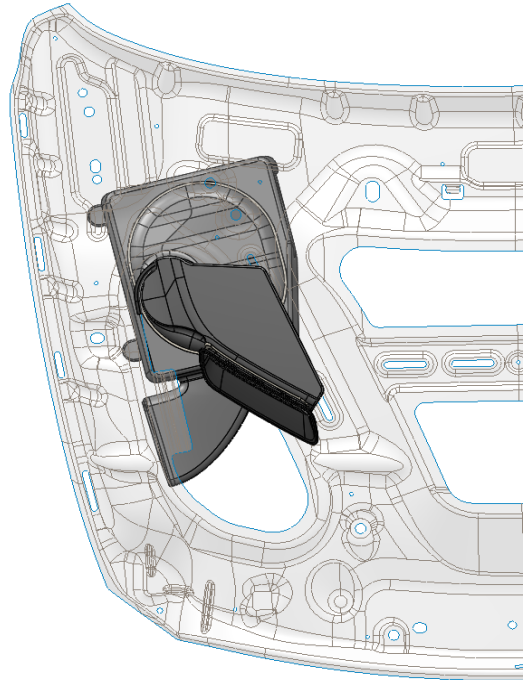
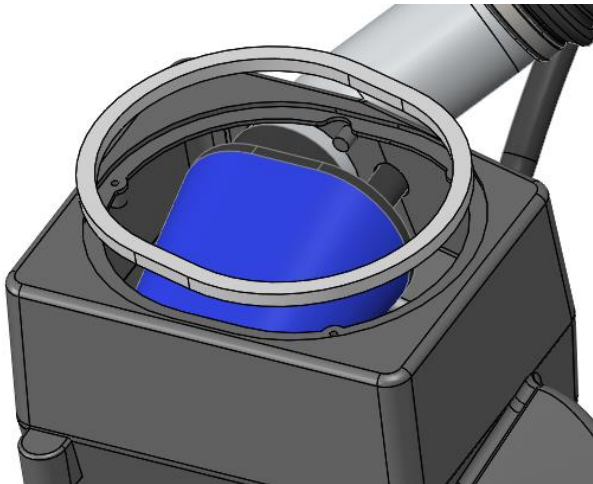
9. Install the remaining M6 x 30mm bolt and washer by moving the Scoop back and forth until you feel it engage the rear insert. Do not tighten.

10. Install the new Flow-Thru Bezel in the hood in the reverse order the old one was removed.



11. Slide the Scoop against the Bezel making sure the seal engages and torque the three (3) bolts to 4 Nm (+/- 0.2)  
(bottom view)

12. Remove the three (3) bolts that secure the sealing panel of the 77070023AC Air Box. Save the panel and bolts.



13. Thoroughly clean and prep the groove in Air Box with isopropyl alcohol or similar and firmly apply the Air Box seal in the same recess that supported the air box sealing panel.

14. Close the hood carefully to check clearances and seal engagement. Make adjustments where necessary to complete the installation.  
(Top down view for illustrative purposes)

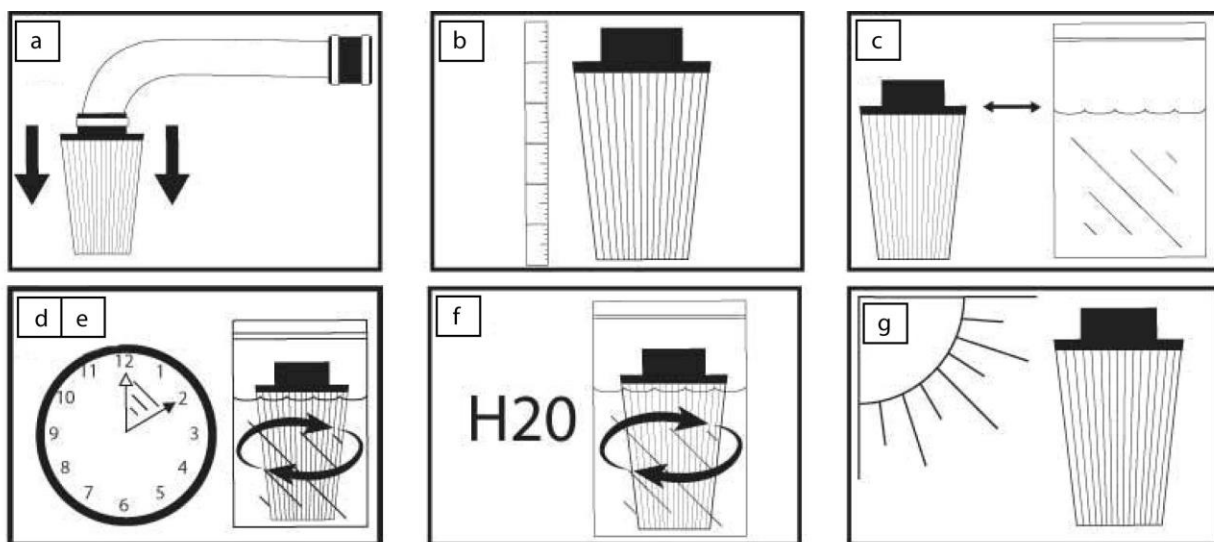


## Cleaning Instructions: MOPAR DRYFLOW Air Filter

(It is recommended that you service your MOPAR air filter every 20,000 miles for optimum performance.)

- Remove the air filter from intake system and set the filter clamp aside.
- Measure the length of the filter media.
- Fill a pail with warm clean water to the depth determined in Step B. Add a mild household detergent or DRYFLOW air filter cleaning solution to the water.
- Without allowing the solution to flow into the filter neck, submerge the filter into the water and let it soak for 10 minutes. After soaking, rotate the filter back and forth to agitate the water and knock off dirt.
- Empty the bucket of dirty water. Repeat steps C and D.
- Refill the pail with clean warm water and rinse by rotating the filter as in step D. The water should be clear with no signs of dirt in the pail.
- Allow the filter to air dry. Re-install the filter on the intake system once it is dry.

**DO NOT APPLY ANY OIL TO THIS FILTER.**



*For technical assistance regarding MOPAR Cold Air Intake Systems, please call toll-free 1-888-528-HEMI (528-4364).*