

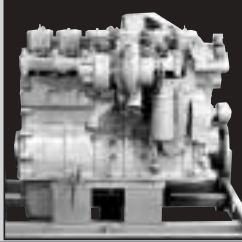


# 2003 DIESEL

REMANUFACTURED  
ENGINES &  
COMPONENTS



# *Mopar Remanufactured*



# *Diesel Engines*

# *and Components*

# *Provide New Power*

## PRODUCT & MARKET OVERVIEW

<b>Product Line</b>	Mopar provides remanufactured diesel engines and components for 1988-2003 Dodge Trucks.				
<b>Remanufacturing Process</b>	Core inspection, disassembly, cleaning and assembly with continuous visual inspection and final functional testing. Process is designed to meet original equipment engineering standards.				
<b>The Mopar Difference</b>	<ul style="list-style-type: none"> <li>• Each block is torn down and every component is cleaned and inspected.</li> <li>• All gaskets, core plugs and seals are replaced.</li> <li>• New components include camshaft, rocker arms, bearings, pushrods, valves, pistons and rings.</li> <li>• Finished assemblies are computer tested to ensure quality and performance reliability.</li> </ul>				
<b>Mopar Warranty</b>	<p>All Mopar Cummins-Diesel Reman engine and component kits plus starters and electronic control modules include:                      12-months, 160,000 kilometers</p> <p>A/C compressors, alternators, electric fuel pumps and SBECs are covered under Mopar's basic warranty. Torque converters, manual transaxles and RWD automatic/manual transmissions are covered by the Mopar Reman 3-year, 60,000 km. limited powertrain warranty.</p>				
<b>Technical Support</b>	<table> <tr> <td>7 a.m. - 8 p.m. EST</td> <td>1-800-343-7357</td> </tr> <tr> <td>8 a.m. - 5 p.m. CST</td> <td>1-800-777-3266</td> </tr> </table>	7 a.m. - 8 p.m. EST	1-800-343-7357	8 a.m. - 5 p.m. CST	1-800-777-3266
7 a.m. - 8 p.m. EST	1-800-343-7357				
8 a.m. - 5 p.m. CST	1-800-777-3266				

WHEN IT COMES TO HAULING POWER, DURABILITY AND RELIABILITY, A LOT OF TRUCK OWNERS DEPEND ON DIESEL ENGINES AND COMPONENTS TO GET THE JOB DONE. SO WHAT HAPPENS WHEN THE VEHICLE NEEDS ANOTHER ENGINE? IF YOU LOOK AT QUALITY, COST AND VALUE, THERE'S ONLY ONE CHOICE — A MOPAR REMAN ENGINE. NOW, IF YOU SUGGEST A MOPAR REMAN ENGINE TO A CUSTOMER, HE OR SHE MAY HAVE QUESTIONS, SUCH AS:



### Why would I want a remanufactured engine?

If it's quality they're concerned about, explain how a Mopar reman engine meets or exceeds all original equipment manufacturer's specifications. With rebuilt units, usually only the parts that have failed are replaced. This may result in comebacks because many times other parts of the engine were affected. Obviously, this will cause more engine problems down the road.

With a reman engine, all parts are inspected, and those that don't meet original equipment specifications are either restored to these specs or replaced.



### What happens, exactly, during the remanufacturing process?

The engine remanufacturing process is divided into four categories: Disassembly, Cleaning, Pre-Inspection and Assembly. Here's a breakdown of each step along the way.

**Disassembly** — Generally, the engine cores arrive in one piece, so disassembly becomes the first stage of remanufacturing. Close inspection is given to the parts as they are removed, to establish their usability. The scrap material is separated

from the good components, which then continues through the remanufacturing process. Usually, anywhere from 8 to 10 percent of the material received is found to be non-salvageable.

**Cleaning** — Once the components are disassembled and separated, each piece is cleaned thoroughly. The cleaning process depends on the material composition of the component. Some cleaning methods include:

- Hot Salt Bath
- Chemical Washing
- Shot Blasting

These processes are extremely effective in stripping away dirt and grease, making the inspection process easier and more accurate. Not only do the parts look better, but any cracks or flaws that weren't obvious before usually show up at this point.

**Pre-Inspection** — Once the components are cleaned, they are individually inspected. Any problem discovered after cleaning means that the part is immediately scrapped. Only components that meet original equipment engineering specifications are sent to assembly.

**Assembly** — During the entire assembly process, components are inspected continuously to ensure quality. In addition, unlike rebuilt engines, all gaskets, core plugs and seals are 100 percent replaced. Other new components include bearings, cam bushings, rocker arms, push rods, piston rings and cylinder head bolts.

Throughout assembly, parts are tested for fit and functionality. The finished engines are computer tested to ensure top quality

performance. It's a long, complicated process, but the result is an engine designed to give years of reliable service.

### So how much is this going to cost me?

This probably is the question you will have to answer next and, with it, you'll be able to provide one of the most compelling reasons to go with a Mopar remanufactured engine. The fact is, remanufactured engines typically cost up to 50 percent less than new engines.



When serious engine difficulties arise, many customers cannot afford the cost of a brand-new vehicle. That's why many are opting for replacing the engine instead; especially when the rest of the vehicle is still in good condition.

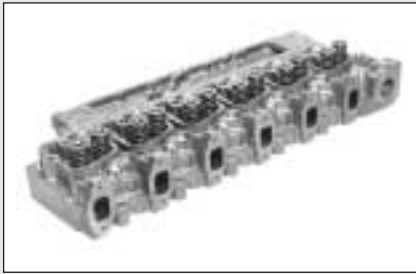
Getting the customer back on the road with a quality Mopar remanufactured engine at a reasonable cost is the objective. It just so happens that Mopar Remanufacturing delivers on this promise better than any aftermarket brand.

# The Closer You Look, the Better We Look

Top Quality Remanufactured Parts Mean Durable Engines For Your Customers

When most people look at an engine, they see the whole engine. Mopar Remanufacturing, however, sees the hundreds of parts that are necessary to provide reliable power. In addition, Mopar puts a great deal of effort into remanufacturing an extremely wide variety of hard-to-find parts, so it can provide a replacement engine for almost any vehicle. Here are some examples of key engine components that get special attention from Mopar Remanufacturing.

**Cylinder Head Assembly** — Mopar will still remanufacture the cylinder heads when a



complete engine replacement isn't necessary. Mopar Diesel In-Line, 6-cylinder heads use original equipment components and meet strict original equipment engineering standards. In addition, replacing only the cylinder heads when necessary saves the customer the cost of an entire engine.

**Water Pump Assemblies** — Basic operations include pre-inspection, salvage, assembly, testing and packaging. Since seals,



bearings, and the impeller are replaced 100%, the major focus of the remanufacturing operation centers on the body and pulley.

**Lube Pumps** — The pump supplies lubricating oil to all internal diesel engine parts to reduce friction and lower operating



temperatures. Since it is critical that the pump rotates freely, all burrs are removed from the gears and shafts. Torque checks are also made to ensure minimal rotational interference. All pumps undergo 100% functional testing for high and low pressure, and all bushings, bearings and gaskets are replaced with brand-new parts.

**Connecting Rods** — The connecting rod is a key component that transfers power from the piston to the crankshaft which, in turn,



drives the diesel engine. These rods are inspected to detect potentially damaging cracks and to ensure a superfine finish on the wear surfaces. All rods are then checked with magnetic particle testing equipment, and each rod is torqued and rehoned to original specifications.

**Turbochargers** — One of the fastest growing parts lines, more and more customers are discovering the advantages of a remanufactured diesel turbocharger.



State-of-the-art processes are used to produce high quality, reliable turbos. This technology includes laser micrometers, CNC lathes and

delicate balancing machines. When any turbo is in operation, the turbine wheel may reach speeds up to 100,000 rpm, so holding tight tolerances is critical to proper turbo performance.

**Fuel Injector** — These components are crucial for distributing fuel to the cylinders. All critical parts are carefully examined



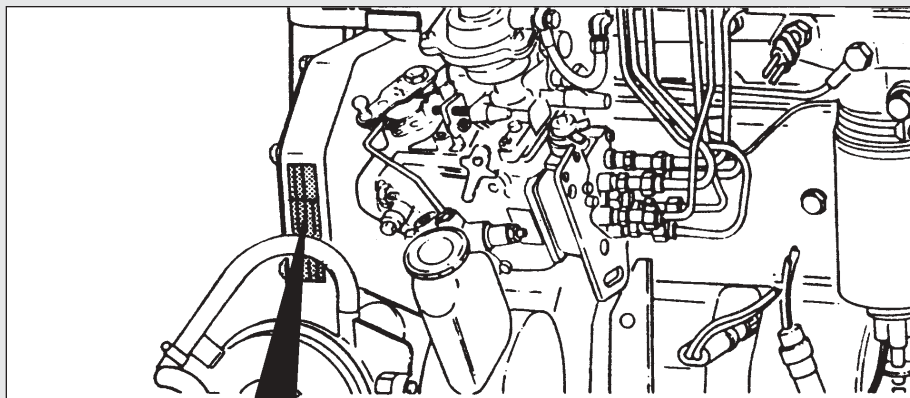
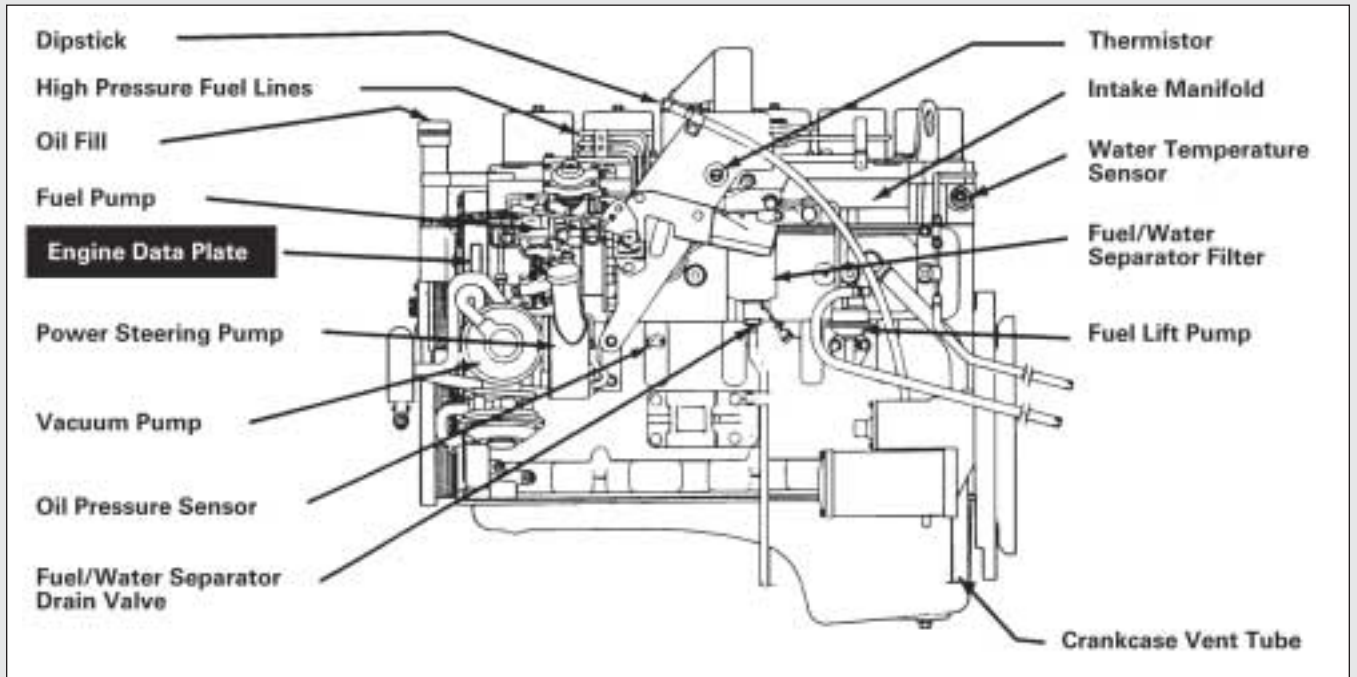
using the latest in measuring and gauging technology. Every remanufactured injector must pass rigorous testing on customized high-tech calibration test stands and meet original equipment specifications.




## CPL IDENTIFICATION

To help you with product identification, Control Parts Listing (CPL) information is found on the engine data plate. This number will help determine the appropriate DaimlerChrysler replacement part number.

## FUEL SIDE OF ENGINE



 Cummins Engine Company, Inc. Box 3095 Columbus, Indiana 47302-3095	Engine	C.I.D./L	Series	CPL	Engine Serial No.
	Cert. I.D.	359/ 5.9	B	0804	44252750
Warning: Injury May Result and Warranty is Voided if Fuel Rate, RPM or Altitudes Exceed Published Maximum Values for This Model and Application.	Timing-TDC	TDC 1.40 mm			Cust. Spec.
	Valve lash cold	.010 in. Int. .020 in.			41671
Date of Mtg. Made in U.S.A.	Fixing Order	153624			Rated HP
	Low Idle RPM	700	E.C.S.	LDA	160 at 2500 RPM
					Fuel rate at rated HP
					78.0 mm <sup>3</sup> /stroke
					Model Name
					6BT -5.9

**CPL**

# MOPAR REMAN / engine matrix

Below is a helpful matrix identifying which engine parts are included with the reman engine assembly.

## MOPAR REMAN ENGINE MATRIX

MODEL YEAR	ENGINE	CYLINDER BLOCK	CYLINDER HEAD(S)	CRANKSHAFT	MAIN & ROD BEARINGS	CONNECTING ROD SET	PISTON, PIN, RINGS SET	CAMSHAFT(S)	VALVES AND SPRINGS	ROCKER ARMS	ROCKER SHAFTS	PUSHRODS	TAPPETS	CYL. HEAD GASKET(S)	VALVE COVER(S) W/GASKETS
<b>COMPLETE ENGINE ASSEMBLIES</b>															
1997	R3040141	x	x	x	x	x	x	x	x	x	x	x	x	x	x
1998	R3040141AB	x	x	x	x	x	x	x	x	x	x	x	x	x	x
1998	R3040143AB	x	x	x	x	x	x	x	x	x	x	x	x	x	x
1993-91.5	R4711579	x	x	x	x	x	x	x	x	x	x	x	x	x	x
1995-94	R4711581	x	x	x	x	x	x	x	x	x	x	x	x	x	x
1996	R4864331	x	x	x	x	x	x	x	x	x	x	x	x	x	x
1996	R4864332	x	x	x	x	x	x	x	x	x	x	x	x	x	x
<b>LONG BLOCK ASSEMBLIES</b>															
2000-98.5	R5016374AA	x	x	x	x	x	x	x	x	x	x	x	x	x	x
2002-2001	R5019755AA	x	x	x	x	x	x	x	x	x	x	x	x	x	x
2002-2001	R5019756AA	x	x	x	x	x	x	x	x	x	x	x	x	x	x
2003	R5093540AA	x	x	x	x	x	x	x	x	x	x	x	x	x	x
2003	R5093538AA	x	x	x	x	x	x	x	x	x	x	x	x	x	x
<b>SHORT BLOCK ENGINE ASSEMBLIES</b>															
1991-89	R4429255	x	x	x	x	x	x							x	
1993-91.5	R4713169	x		x	x	x	x								
1995-94	R4761368	x		x	x	x	x								
1998-96	R4864329	x		x	x	x	x								
1998-96	R4864330	x		x	x	x	x								
2000-98.5	R5015092AA	x		x	x	x	x								
2002-2001	R5019753AA	x		x	x	x	x								
2002-2001	R5019754AA	x		x	x	x	x								
2003	R5093539AA	x		x	x	x	x								
2003	R5093537AA	x		x	x	x	x								

**MOPAR REMAN ENGINE MATRIX (CONT.)**

MODEL YEAR	ENGINE	OIL PUMP	OIL PICK-UP	OIL PAN	WATER PUMP	EXHAUST MANIFOLD	INTAKE MANIFOLD	FUEL INJECTORS	FUEL PUMP	TURBOCHARGER	BLUE/YELLOW PLASTIC CRATE	CARDBOARD BOX	METAL SKID	WOODEN SKID
<b>COMPLETE ENGINE ASSEMBLIES</b>														
1997	R3040141	x		x	x	x	x	x	x	x			x	
1998	R3040141AB	x		x	x	x	x	x	x	x			x	
1998	R3040143AB	x		x	x	x	x	x	x	x			x	
1993-91.5	R4711579	x		x	x	x	x	x	x	x			x	
1995-94	R4711581	x		x	x	x	x	x	x	x			x	
1996	R4864331	x		x	x	x	x	x	x	x			x	
1996	R4864332	x		x	x	x	x	x	x	x			x	
<b>LONG BLOCK ASSEMBLIES</b>														
2000-98.5	R5016374AA	x		x	x		x						x	
2002-2001	R5019755AA	x		x	x		x						x	
2002-2001	R5019756AA	x		x	x		x						x	
2003	R5093540AA	x		x	x		x						x	
2003	R5093538AA	x		x	x		x						x	
<b>SHORT BLOCK ENGINE ASSEMBLIES</b>														
1991-89	R4429255											x		x
1993-91.5	R4713169										x	x		x
1995-94	R4761368										x	x		x
1998-96	R4864329										x	x		x
1998-96	R4864330										x	x		x
2000-98.5	R5015092AA										x	x		x
2002-2001	R5019753AA										x	x		x
2002-2001	R5019754AA										x	x		x
2003	R5093539AA										x	x		x
2003	R5093537AA										x	x		x

## FACTORY REMANUFACTURED TO DAIMLERCHRYSLER STANDARDS:

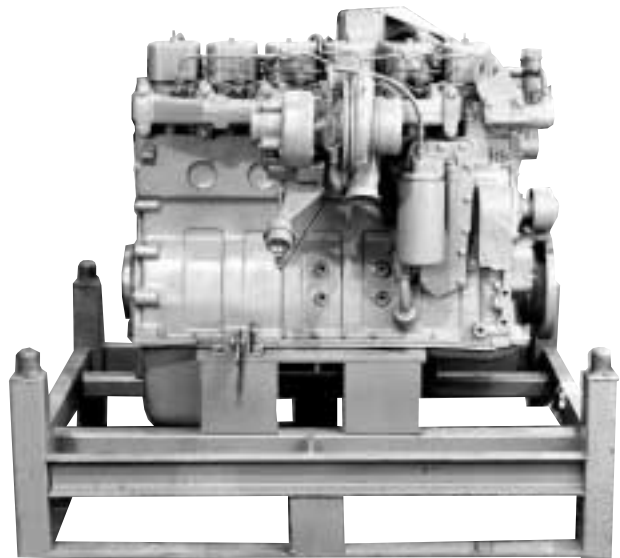
Engine Block, Cylinder Head, Crankshaft, Turbocharger, Injectors, Water Pump, Connecting Rods, Fuel Pump, Vibration Damper and Lube Pump.

## 100% NEW PARTS:

Camshaft, Pistons, Rings, Gaskets, Seals, Hoses, Main Rod Bearings, Fuel Line, Filters

## LONG BLOCK KIT CONTAINS:

- Remanufactured Short Block Kit
- New Camshaft and Camshaft Gear
- Remanufactured Cylinder Head Kit
- Valve Cover and Oil Pan
- Remanufactured Lube Pump Kit
- Remanufactured Water Pump Kit
- Gear Cover



## CUMMINS-DIESEL APPLICATIONS

MODEL YEAR	ENGINE CPL	REMAN PART NO.
<b>LONG BLOCK ASSEMBLIES</b>		
2003	2624, 8223 (245 HP)	R5093540AA *
	8218, 8224 (235 HP)	R5093538AA *
2002 - 2001	2415, 2495, 2906, 2907, 8034, 8035 (245 HP M/T)	R5019756AA *
	2496, 2497, 2865, 2866, 2902, 2903, 2904, 2905, 8030, 8031, 8032, 8033 (235 HP)	R5019755AA *
2000-1998.5	2024, 2098, 2279, 2280, 2512, 2513, 2514, 2515, 2516, 2517, 2518, 2519, 2616, 2617, 2618, 2619, 2660, 2661, 2662, 2663	R5016374AA *
<b>COMPLETE ENGINE ASSEMBLIES*</b>		
1998	2175 (EPA 215 HP M/T)	R3040141AB *
	2174 (EPA 180 HP A/T)	R3040143AB *
1997	2175 (EPA 215 HP M/T)	R3040141
1996	2023 (215 HP M/T)	R4864332
	2022 (180 HP A/T)	R4864331
1995-94	1550, 1816 (175 HP M/T)	R4711581
1993-91.5	1351, 1579 (160 HP)	R4711579

\*Approved for new vehicle warranty usage.



## SHORT BLOCK KIT CONTAINS:

- Cylinder Block
- Crankshaft and Gear
- Connecting Rods
- Main, Thrust and Rod Bearing Set
- Piston and Rings
- Camshaft Bushings (Camshaft not included)
- Block Hardware Kit



### CUMMINS-DIESEL APPLICATIONS

MODEL YEAR	ENGINE CPL	REMAN PART NO.
2003	2624, 8223 (245 HP)	R5093539AA*
	8218, 8224 (235 HP)	R5093537AA*
2002 – 2001	2415, 2495, 2906, 2907, 8034, 8035 (245 HP M/T)	R5019754AA*
	2496, 2497, 2865, 2866, 2902, 2903, 2904, 2905, 8030, 8031, 8032, 8033 (235 HP)	R5019753AA*
2000-1998.5	2024, 2098, 2279, 2280, 2512, 2513, 2514, 2515, 2516, 2517, 2518, 2519, 2616, 2617, 2618, 2619, 2660, 2661, 2662, 2663	R5015092AA*
1998-96	2023, 2175 (215 HP)	R4864330*
	1863, 2022, 2174, 2308 (180 HP)	R4864329*
1995-94	1549, 1550, 1815, 1816, 1959, 1968	R4761368
1993-91.5	1351, 1579	R4713169
1991-89	804	R4429255

\*Approved for new vehicle warranty usage.

## CONNECTING ROD KIT CONTAINS:

- Connecting Rod
- Rod Bushing (1 set)
- Rod Bolts



### CUMMINS-DIESEL APPLICATIONS

MODEL YEAR	ENGINE CPL	REMAN PART NO.
2003-1998.5	2024, 2098, 2279, 2280, 2512, 2513, 2514, 2515, 2616, 2617, 2618, 2619, 2660, 2661, 2662, 2663, 2415, 2495, 2496, 2497, 2865, 2866, 2902, 2903, 2904, 2905, 2906, 2907, 8030, 8031, 8032, 8033, 8034, 8035, 8218, 8224, 8223, 2624, (All 24-Valve Engines)	R5003649AA*
1998-1989	804, 1351, 1549, 1550, 1579, 1815, 1816, 1863, 1959, 2022, 2023, 2174, 2175, 2308 (All 12-Valve Engines)	R4761457*

\*Approved for new vehicle warranty usage.

## CRANKSHAFT KIT CONTAINS:

- Crankshaft
- Crankshaft Gear
- Dowel Pin
- Main, Thrust and Rod Bearings (1 set)



### CUMMINS-DIESEL APPLICATIONS

MODEL YEAR	ENGINE CPL	REMAN PART NO.
2003	2624, 8218, 8223, 8224	R5086725AA *
2002–2001	2415, 2495, 2496, 2497, 2865, 2866, 2902, 2903, 2904, 2905, 2906, 2907, 8030, 8031, 8032, 8033, 8034, 8035	R4429632 *
1998–1989	804, 1351, 1549, 1550, 1579, 1815, 1816, 1863, 1959, 2022, 2023, 2174, 2175, 2308 (All 12-Valve Engines)	R4429632 *

\*Approved for new vehicle warranty usage.

## CYLINDER HEAD KIT CONTAINS:

- Cylinder Head (excludes head gasket)
- Valves
- Springs



### CUMMINS-DIESEL APPLICATIONS

MODEL YEAR	ENGINE CPL	REMAN PART NO.
2003	2624, 8218, 8223, 8224	R5086860AA *
2002–1998.5	2024, 2098, 2279, 2280, 2496, 2497, 2415, 2495, 2512, 2513, 2514, 2515, 2616, 2617, 2618, 2619, 2660, 2661, 2662, 2663, 2865, 2866, 2902, 2903, 2904, 2905, 2906, 2907, 8030, 8031, 8032, 8033, 8034, 8035	R5014202AA *
1998–91.5	1351, 1549, 1550, 1579, 1815, 1816, 1863, 1959, 1968, 2022, 2023, 2174, 2175, 2308	R4864893 *
1991–89	804 (7 mm Head Replaces 9 mm Head - Requires 7 mm Injectors)	R4797177

\*Approved for new vehicle warranty usage.

## TURBOCHARGER KIT CONTAINS:

- Turbocharger
- Exhaust Flange Gasket
- Oil Line Gaskets



### CUMMINS-DIESEL APPLICATIONS

MODEL YEAR	ENGINE CPL	REMAN PART NO.
2003	2624, 8218, 8223, 8224	R5086863AB *
2002–2000	2415, 2495, 2496, 2497, 2662, 2663, 2904, 2905, 2906, 2907, 2662, 2663, 8030, 8031, 8032, 8033, 8034, 8035 (235 HP M/T)	R5017509AA *
2000–1999	2616, 2617, 2618, 2619, 2660, 2661	R5014203AA *
1998.5	2024, 2098, 2279, 2280, 2512, 2513, 2514, 2515	R5010961AA *
1998–96.5	1863, 2308 (CARB)	R5010280AA *
1998–96	2023, 2175 (M/T)	R5010278AA *
1998–94	1816, 1968, 2022, 2174	R5010276AA *
1995–94	1549, 1550, 1815, 1959	R5010960AA
1993-91.5	1351, 1579	R4728700
1991–89	804	R4728036

\*Approved for new vehicle warranty usage.

## WATER PUMP KIT CONTAINS:

- Water Pump
- Gasket



### CUMMINS-DIESEL APPLICATIONS

MODEL YEAR	ENGINE CPL	REMAN PART NO.
2003	2624, 8218, 8223, 8224	R5086959AA *
2002–1998.5	2024, 2098, 2279, 2280, 2415, 2495, 2496, 2497, 2512, 2513, 2514, 2515, 2616, 2617, 2618, 2619, 2660, 2661, 2662, 2663, 2865, 2866, 2902, 2903, 2904, 2905, 2906, 2907, 8030, 8031, 8032, 8033, 8034, 8035 (All 24-Valve Engines)	R5010964AA *
1998–1989	804, 1351, 1549, 1550, 1579, 1815, 1816, 1863, 1959, 1968, 2022, 2023, 2174, 2175, 2308 (All 12-Valve Engines)	R5003665AA *

\*Approved for new vehicle warranty usage.

# FUEL INJECTOR / fuel injection pump

## FUEL INJECTOR KIT CONTAINS:

- Fuel Injector
- Copper Banjo Seal
- Copper Sealing Washer
- Copper 7 mm to 9 mm Adapter Sleeve  
(where applicable)



### CUMMINS-DIESEL APPLICATIONS

MODEL YEAR	ENGINE CPL	O.E. PART NO.	REMAN PART NO
2002–1998.5	2024, 2279, 2415, 2495, 2496, 2497, 2512, 2514, 2616, 2618, 2662, 2663, 2865, 2866, 2902, 2903, 2904, 2905, 2906, 2907, 8030, 8031, 8032, 8033, 8034, 8035 (235 HP)	05013847AA	R5013847AA*
2002–1998.5	2098, 2280, 2513, 2515, 2617, 2619, 2660, 2661 (215 HP)	05013848AA	R5013848AA*
1998–96	2023, 2175 (215 HP)	N/A	R4864328*
1995–94	1550, 1816 (175 HP)	N/A	R4761595
	1549, 1815, 1959, 1968 (160 HP)	04761596	R4761596
1993–91.5	1351, 1579 (160 HP)	04638651	R4638651
1991–89	804 (7mm injector tip — supersedes 9 mm injector)	04720540	R4720540

\*Approved for new vehicle warranty usage.

## FUEL INJECTION PUMP KIT CONTAINS:

- Fuel Pump (complete assembly)
- Mounting Gasket



### CUMMINS-DIESEL APPLICATIONS

MODEL YEAR	ENGINE CPL	REMAN PART NO.
2002	8034, 8035 (245 HP)	R5019657AD*
2002–2001	2660, 2661, 2662, 2663, 2496, 2497, 2865, 2866, 2902, 2903, 2904, 2905, 8030, 8031, 8032, 8033 (235 HP)	R5019658AD*
2001–00	2415, 2495 2906, 2907 (245 HP M/T)	R5019657AC*
2000–98	2024, 2098, 2279, 2280, 2512, 2513, 2514, 2515, 2616, 2617, 2618, 2619 (235 HP)	R5013925AA*
1998–97	2175 (EPA 215 HP M/T)	R4883974AA*
	2174 (EPA 180 HP A/T)	R4883973AA*
1998–96.5	1863, 2308 (CARB 180 HP)	R4883975AA*
1996	2022 (160 HP A/T)	R4882480
1995–94	1550, 1816 (175 HP M/T)	R4761367
	1549, 1815, 1959, 1968 (160 HP A/T)	R4798548
1993–91.5	1351, 1579 (160 HP)	R4728745
1991–89	804 (160 HP)	R4429991

\*Approved for new vehicle warranty usage.

**LUBE PUMP KIT  
CONTAINS:**

- Lube Pump (complete assembly)
- New Bushings
- New Bearings



**CUMMINS-DIESEL APPLICATIONS**

MODEL YEAR	ENGINE CPL	REMAN PART NO.
2003	2624, 8218, 8223, 8224	R5086845AA*
2002-1989	804, 1351, 1549, 1550, 1579, 1815, 1816, 1863, 1959, 2022, 2023, 2174, 2175, 2308, 2024, 2098, 2279, 2280, 2415, 2495, 2496, 2497, 2512, 2513, 2514, 2515, 2616, 2617, 2618, 2619, 2660, 2661, 2662, 2663, 2865, 2866, 2902, 2903, 2904, 2905, 2906, 2907, 8030, 8031, 8032, 8033, 8034, 8035	R5010965AB*

\*Approved for new vehicle warranty usage.

**STARTERS:**

- New brushes and holders
- New battery posts, copper field coils and noise reduction pads
- New pinion assembly
- New solenoid switch
- New over-running clutch



**CUMMINS-DIESEL APPLICATIONS**

MODEL YEAR	ENGINE CPL	REMAN PART NO.
2002-94	1549,1550, 1815, 1816, 1863, 1959, 2022, 2023, 2174, 2175, 2308, 2024, 2098, 2279, 2280, 2512, 2513, 2514, 2515, 2516, 2517, 2518, 2519, 2616, 2617, 2618, 2619, 2660, 2661, 2662, 2663, 2415, 2495, 2496, 2497, 2865, 2866, 2902, 2903, 2904, 2905, 2906, 8030, 8031, 8032, 8033, 8034, 8035	R4741012
1993-89	804, 1351, 1579	R4428221AB

# ELECTRONIC CONTROL MODULES

## ELECTRONIC CONTROL MODULES:

- Mounts to engine block
- Contains engine, performance and emissions calibrations



### CUMMINS-DIESEL APPLICATIONS

MODEL YEAR	ENGINE CPL	O.E. PART NO.	REMAN PART NO.	O.E. GENERIC PART NO.	REMAN GENERIC PART NO.
2003	8218, 8224, 2624, 8223	N/A	N/A	05086154AB	R5086154AB
2002	8030, 8031, 8032, 8033, 8034, 8035	N/A	N/A	05083997AA	R5083997AA
2001*	2415 (EPA 245 HP MT)	333032305J	R33032305J	05083997AA	R5083997AA
2001*	2495 (CARB 24 HP MT)	373930304J	R73930304J	05083997AA	R5083997AA
2001*	2496 (EPA 235 HP MT)	333033306J	R33033306J	05083997AA	R5083997AA
2001*	2497 (CARB 235 HP MT)	373931305J	R73931305J	05083997AA	R5083997AA
2001*	2865 (EPA 235 HP AT)	333030307J	R33030307J	05083997AA	R5083997AA
2001*	2866 (CARB 235 HP AT)	373932306J	R73932306J	05083997AA	R5083997AA
2001	2902 (EPA 235 HP AT)	383237303J	R83237303J	05083997AA	R5083997AA
2001	2903 (CARB 235 HP AT)	383238303J	R83238303J	05083997AA	R5083997AA
2001	2904 (EPA 235 HP MT)	383239302J	R83239302J	05083997AA	R5083997AA
2001	2905 (CARB 235 HP MT)	383330302J	R83330302J	05083997AA	R5083997AA
2001	2906 (EPA 245 HP MT)	383331302J	R83331302J	05083997AA	R5083997AA
2001	2907 (CARB 245 HP MT)	383332302J	R83332302J	05083997AA	R5083997AA
2000	2660 (EPA 215 HP AT)	353339304J	R53339304J	05083997AA	R5083997AA
2000	2661 (CARB 215 HP AT)	353430304J	R53430304J	05083997AA	R5083997AA
2000	2662 (EPA 235 HP MT)	353431304J	R53431304J	05083997AA	R5083997AA
2000	2663 (CARB 235 HP MT)	353432304J	R53432304J	05083997AA	R5083997AA
1999	2516, 2616 (EPA 235 HP MT)	323639306J	R23639306J	N/A	R5083996AA
1999	2517, 2617 (EPA 215 HP AT)	323730306J	R23730306J	N/A	R5083996AA
1999	2518, 2618 (CARB 235 HP MT)	323638306J	R23638306J	N/A	R5083996AA
1999	2519, 2619 (CARB 215 HP AT)	323637306J	R23637306J	N/A	R5083996AA
1998.5	2024, 2515 (EPA 235 HP MT)	N/A	R33036304J	N/A	R5083996AA
1998.5	2098, 2513 (EPA 215 HP AT)	N/A	R33037304J	N/A	R5083996AA
1998.5	2279, 2514 (CARB 235 HP MT)	N/A	R33034304J	N/A	R5083996AA
1998.5	2280, 2515 (CARB 215 HP AT)	N/A	R33035304J	N/A	R5083996AA

\*Early production sold first half of 2000.

\*\*All are approved for new vehicle warranty usage.



**SINGLE BOARD ENGINE CONTROLLERS:**

- Preprogrammed, digital computer — adjusts air-fuel ratios, ignition timing and alternator charge rate for optimal performance
- Self tests many input and output circuits
- Faults stored in memory — accessed by Diagnostic Readout Box II



**DIESEL APPLICATIONS**

MODEL YEAR	APPLICATION	REMAN PART NO.
1995	BR Body w/5.9L Diesel, 50-State RFI, A/T 4-speed	R6028336
1993	D Body w/5.9L Diesel, 50 States, M/T	R6029101

**ALTERNATORS:**

- New bearings
- New brushes
- New slip ring assembly (when necessary)
- New positive and negative heat sinks
- Load tested to DaimlerChrysler specifications

All other parts are cleaned with an environmentally sound, recyclable aqueous cleaning system. Inner parts are tested to ensure they meet original equipment specifications.

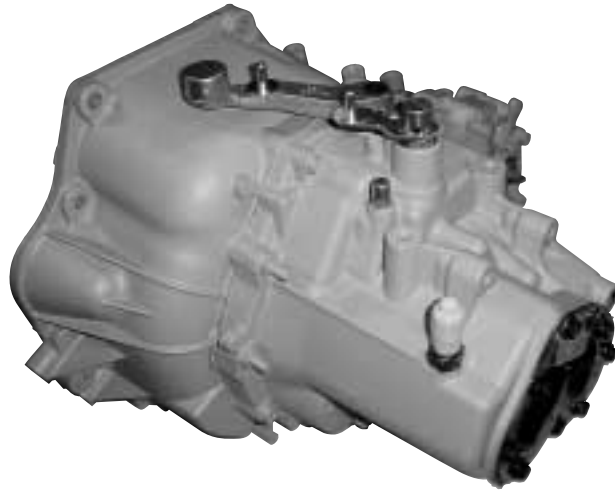


**DIESEL APPLICATIONS**

MODEL YEAR	APPLICATION	REMAN PART NO.
1993-90	D Body w/5.9L Diesel w/120-Amp Rating	R5234374

**MANUAL TRANSAXLES:**

- Each O-ring, gasket and seal is replaced with original equipment replacement parts
- Individual parts are carefully inspected to ensure that they meet original equipment standards
- Any components that fail to meet original equipment standards are replaced with original equipment replacement parts.



**DIESEL APPLICATIONS**

MODEL YEAR	APPLICATION	REMAN PART NO.
1993-88	Getrag Transaxle Cover, 5-Speed, Diesel	R4740035

**ELECTRIC FUEL PUMPS:**

- Extensive product testing for leakage, current draw internal and external leakage, maximum pressure and voltage
- All parts thoroughly inspected, cleaned or replaced

**100% NEW PARTS:**

Rubber O-rings, Gaskets, Sender Cards, Filters, Return Valves



**DIESEL APPLICATIONS**

MODEL YEAR	APPLICATION	REMAN PART NO.
1997-96	5.9L Turbo Diesel	R4798671
1995	5.9L Turbo Diesel	R4864209
1994	5.9L Turbo Diesel	R4864735

**A/C COMPRESSORS:**

- Cylinders are gauged and rehoned
- Shaft bearings are replaced 100% new
- Reed valves are checked and tested for pressure buildup and vacuum capability
- Compressor is assembled in climate-controlled room to control internal dimensional checks, contamination and rust
- Rotational torque of the pump assembly tested 100%
- Each compressor is functionally tested for pumping capacity
- Each compressor is leak tested and must not leak at a rate of more than one pound of refrigerant loss in 80 years with helium mass spectrometer equipment



**DIESEL APPLICATIONS**

MODEL YEAR	APPLICATION	REMAN PART NO.
1999-94	BR Body, Diesel, Type SD7H15	R7151049
1993-90	D Body, Diesel w/Intercooler, Type SDB709	R7091003
1991-88	D Body, 5.9L Diesel, Type SDB709	R4428903

# DIESEL RWD AUTOMATIC/MANUAL TRANSMISSIONS

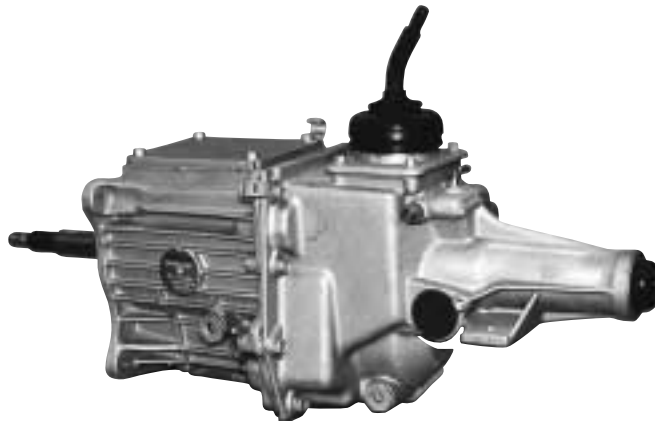
## DIESEL RWD AUTOMATIC TRANSMISSIONS



### TRUCKS

MODEL YEAR	APPLICATION	TRANS.	ENGINE	O.E. PART NO.	REMAN PART NO.
1999-98	BE, BR Body 4x2	47RE	5.9L Diesel	5013628AA	R5013628AA
	BE, BR Body 4x4	47RE	5.9L Diesel	5013630AA	R5013630AA
1997-96	BR Body 4x2	47RE	5.9L Diesel	4883742AA	R4883742AA
	BR Body 4x4	47RE	5.9L Diesel	4883744AA	R4883744AA
1995-94	BR Body 4x2	47RH	5.9L Diesel	52119157	R2119157
	BR Body 4x4	47RH	5.9L Diesel	52119158	R2119158
1993-91	AD Body 4x2	47RH	5.9L Diesel	5014728AA	R5014728AA
	AD Body 4x4	47RH	5.9L Diesel	5014729AA	R5014729AA
2000-01	BE, BR 4x2	47RE	5.9L Diesel	05014773AA	R5014773AA
	BE, BR 4x4	47RE	5.9L Diesel	05014775AA	R5014775AA

## DIESEL MANUAL TRANSMISSIONS



### TRUCKS & VANS

MODEL YEAR	APPLICATION	TRANS.	ENGINE	O.E. PART NO.	REMAN PART NO.
1991-88	Getrag 5-Speed	2WD	5.9L Diesel	53006590	R3006590
1991-88	Getrag 5-Speed	4WD	5.9L Diesel	53006591	R3006591

### TRANSMISSION COVER

MODEL YEAR	APPLICATION	TRANS.	ENGINE	O.E. PART NO.	REMAN PART NO.
1993-88	Getrag Trans. Cover 5-Speed, Cummins-Diesel	2, 4WD	All	4740035	R4740035



## DIESEL TORQUE CONVERTERS

- Remanufactured to the most current design levels – meets O.E. specifications
- Remanufactured to a level high enough to qualify for warranty replacement
- Remanufactured with O.E. replacement components, including Vector balancing on lockup-style units



### TRUCK

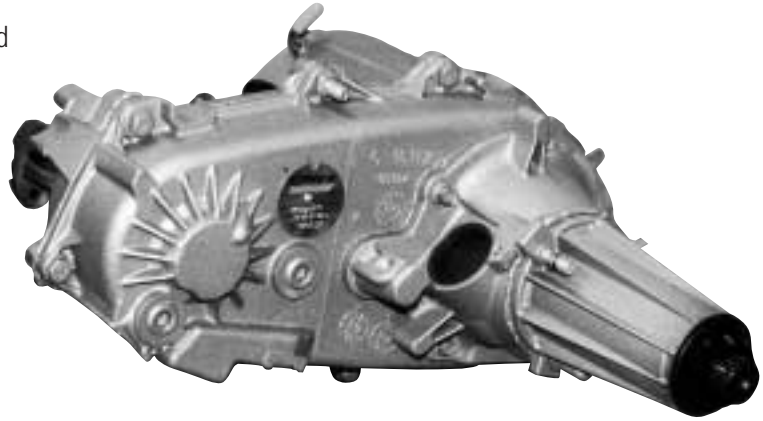
MODEL YEAR	APPLICATION	O.E. PART NO.	REMAN PART NO.
<b>12.2"</b>			
2002-97	BR, BE Bodies w/5.9L Turbo Diesel	52118868	R2118868*
1996-94	BR, BE Bodies w/5.9L Turbo Diesel	52117644	R2117644

\*Approved for new vehicle warranty usage.

# DIESEL TRANSFER CASES

## DIESEL TRANSFER CASES

- All remanufactured transfer cases are disassembled and thoroughly cleaned
- Each O-ring, gasket and seal is replaced with O.E. replacement parts
- Individual parts are carefully inspected to ensure that they meet O.E. standards
- Any components that fail to meet O.E. standards are replaced with O.E. replacement parts
- Each transfer case is tested to O.E. specifications on a computer-controlled dynamometer, and all remanufactured transfer cases incorporate the latest product updates



## TRUCKS

MODEL YEAR	VEHICLE APPLICATION	TRANS.	ENGINE	MODEL	O.E. PART NO.	REMAN PART NO.
1999-98	BR, BE Bodies	MT	5.9L Diesel	241	52105024	R2105024
1997-96	BR Body	AT	5.9L Diesel	241-HD	52098153 52105093	R2098153
1997-95	BR Body	MT	5.9L Diesel	241-HD	52098512 52098534 52098678 52105092	R2098678





# Catalogue & Product Line Inquiry/Comment Form

If you would like to state any concerns or make recommendations about the following:

- ◆ Product application admissions
- ◆ Catalogue part number recommendations
- ◆ Application recommendations

Please fill out the attached Catalogue & Product Line Inquiry/Comment Form.

Send completed form to:

**MOPAR PARTS  
ATTN: REMAN POWERTRAIN GROUP  
26311 LAWRENCE AVE.  
CIMS 423-15-10  
CENTER LINE, MI 48015  
UNITED STATES OF AMERICA**



**DIESEL ENGINE CATALOGUE & PRODUCT LINE INQUIRY/COMMENT FORM  
PLEASE DO NOT USE THIS CARD TO ORDER ADDITIONAL CATALOGUES**

Part or Catalogue Description & Number: \_\_\_\_\_

Inquiry/Comment: \_\_\_\_\_

\_\_\_\_\_

\_\_\_\_\_

Submitted by: Name: \_\_\_\_\_

Address: \_\_\_\_\_

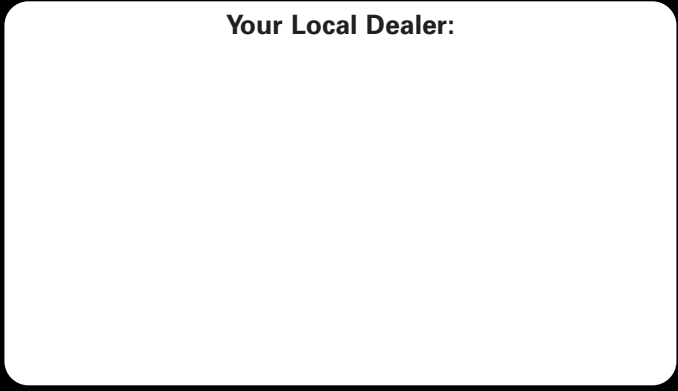
Phone Number: \_\_\_\_\_  Information Only  Response Requested

Thank you for your interest in Mopar products and your time in submitting this form.





Your Local Dealer:



CHRYSLER JEEP DODGE  
The Brands of DaimlerChrysler